



# Title Plan - LT 525219

---

**Survey Number** LT 525219  
**Surveyor Reference** 1980 Stage 6  
**Surveyor** Campbell Lloyd Harvey  
**Survey Firm** Harvey Surveying Limited  
**Surveyor Declaration**

---

## Survey Details

**Dataset Description** Lots 7, 109, 110, 251 - 300, 394, 395 and 1010 Being a Subdivision of Lot 1007 DP 522950  
**Status** Initiated  
**Land District** North Auckland  
**Submitted Date**  
**Survey Class** Class A  
**Survey Approval Date**  
**Deposit Date**

---

## Territorial Authorities

Waikato District

---

## Comprised In

CT 830888

---

## Created Parcels

Parcels	Parcel Intent	Area	CT Reference
Lot 7 Deposited Plan 525219	Fee Simple Title	0.0248 Ha	Multiple
Lot 109 Deposited Plan 525219	Vesting on Deposit for Road	0.4060 Ha	
Lot 110 Deposited Plan 525219	Vesting on Deposit for Road	0.5159 Ha	
Lot 251 Deposited Plan 525219	Fee Simple Title	0.0573 Ha	839787
Lot 252 Deposited Plan 525219	Fee Simple Title	0.0606 Ha	839788
Lot 253 Deposited Plan 525219	Fee Simple Title	0.0585 Ha	839789
Lot 254 Deposited Plan 525219	Fee Simple Title	0.0595 Ha	839790
Lot 255 Deposited Plan 525219	Fee Simple Title	0.0592 Ha	839791
Lot 256 Deposited Plan 525219	Fee Simple Title	0.0590 Ha	839792
Lot 257 Deposited Plan 525219	Fee Simple Title	0.0572 Ha	839793
Lot 258 Deposited Plan 525219	Fee Simple Title	0.0572 Ha	839794
Lot 259 Deposited Plan 525219	Fee Simple Title	0.0590 Ha	839795
Lot 260 Deposited Plan 525219	Fee Simple Title	0.0604 Ha	839796
Lot 261 Deposited Plan 525219	Fee Simple Title	0.0581 Ha	839797
Lot 262 Deposited Plan 525219	Fee Simple Title	0.0569 Ha	839798
Lot 263 Deposited Plan 525219	Fee Simple Title	0.0589 Ha	839799
Lot 264 Deposited Plan 525219	Fee Simple Title	0.0565 Ha	839800
Lot 265 Deposited Plan 525219	Fee Simple Title	0.0717 Ha	839801
Lot 266 Deposited Plan 525219	Fee Simple Title	0.0710 Ha	839802
Lot 267 Deposited Plan 525219	Fee Simple Title	0.0661 Ha	839803
Lot 268 Deposited Plan 525219	Fee Simple Title	0.0622 Ha	839804
Lot 269 Deposited Plan 525219	Fee Simple Title	0.0692 Ha	839805

# Title Plan - LT 525219

---

## Created Parcels

Parcels	Parcel Intent	Area	CT Reference
Lot 270 Deposited Plan 525219	Fee Simple Title	0.0596 Ha	839806
Lot 271 Deposited Plan 525219	Fee Simple Title	0.0593 Ha	839807
Lot 272 Deposited Plan 525219	Fee Simple Title	0.0596 Ha	839808
Lot 273 Deposited Plan 525219	Fee Simple Title	0.0572 Ha	839809
Lot 274 Deposited Plan 525219	Fee Simple Title	0.0613 Ha	839810
Lot 275 Deposited Plan 525219	Fee Simple Title	0.0639 Ha	839811
Lot 276 Deposited Plan 525219	Fee Simple Title	0.0575 Ha	839812
Lot 277 Deposited Plan 525219	Fee Simple Title	0.0575 Ha	839813
Lot 278 Deposited Plan 525219	Fee Simple Title	0.0565 Ha	839814
Lot 279 Deposited Plan 525219	Fee Simple Title	0.0616 Ha	839815
Lot 280 Deposited Plan 525219	Fee Simple Title	0.0726 Ha	839816
Lot 281 Deposited Plan 525219	Fee Simple Title	0.0630 Ha	839817
Lot 282 Deposited Plan 525219	Fee Simple Title	0.0586 Ha	839818
Lot 283 Deposited Plan 525219	Fee Simple Title	0.0599 Ha	839819
Lot 284 Deposited Plan 525219	Fee Simple Title	0.0554 Ha	839820
Lot 285 Deposited Plan 525219	Fee Simple Title	0.0623 Ha	839821
Lot 286 Deposited Plan 525219	Fee Simple Title	0.0546 Ha	839822
Lot 287 Deposited Plan 525219	Fee Simple Title	0.0630 Ha	839823
Lot 288 Deposited Plan 525219	Fee Simple Title	0.0603 Ha	839824
Lot 289 Deposited Plan 525219	Fee Simple Title	0.0573 Ha	839825
Lot 290 Deposited Plan 525219	Fee Simple Title	0.0609 Ha	839826
Lot 291 Deposited Plan 525219	Fee Simple Title	0.0576 Ha	839827
Lot 292 Deposited Plan 525219	Fee Simple Title	0.0579 Ha	839828
Lot 293 Deposited Plan 525219	Fee Simple Title	0.0582 Ha	839829
Lot 294 Deposited Plan 525219	Fee Simple Title	0.0584 Ha	839830
Lot 295 Deposited Plan 525219	Fee Simple Title	0.0587 Ha	839831
Lot 296 Deposited Plan 525219	Fee Simple Title	0.0601 Ha	839832
Lot 297 Deposited Plan 525219	Fee Simple Title	0.0598 Ha	839833
Lot 298 Deposited Plan 525219	Fee Simple Title	0.0596 Ha	839834
Lot 299 Deposited Plan 525219	Fee Simple Title	0.0593 Ha	839835
Lot 300 Deposited Plan 525219	Fee Simple Title	0.0592 Ha	839836
Lot 394 Deposited Plan 525219	Fee Simple Title	0.0633 Ha	839837
Lot 395 Deposited Plan 525219	Fee Simple Title	0.0592 Ha	839838
Lot 1010 Deposited Plan 525219	Fee Simple Title	4.0421 Ha	839839
Area A Deposited Plan 525219	Easement		
Area B Deposited Plan 525219	Easement		
Area C Deposited Plan 525219	Easement		
Area D Deposited Plan 525219	Easement		
Area E Deposited Plan 525219	Easement		
Area F Deposited Plan 525219	Easement		
Area G Deposited Plan 525219	Easement		
Area H Deposited Plan 525219	Easement		
Area I Deposited Plan 525219	Easement		



# Title Plan - LT 525219

---

## Created Parcels

Parcels	Parcel Intent	Area	CT Reference
Area J Deposited Plan 525219	Easement		
<b>Total Area</b>		<hr/> 8.1205 Ha	

# Schedule / Memorandum

Land Registration District

North Auckland

Plan Number

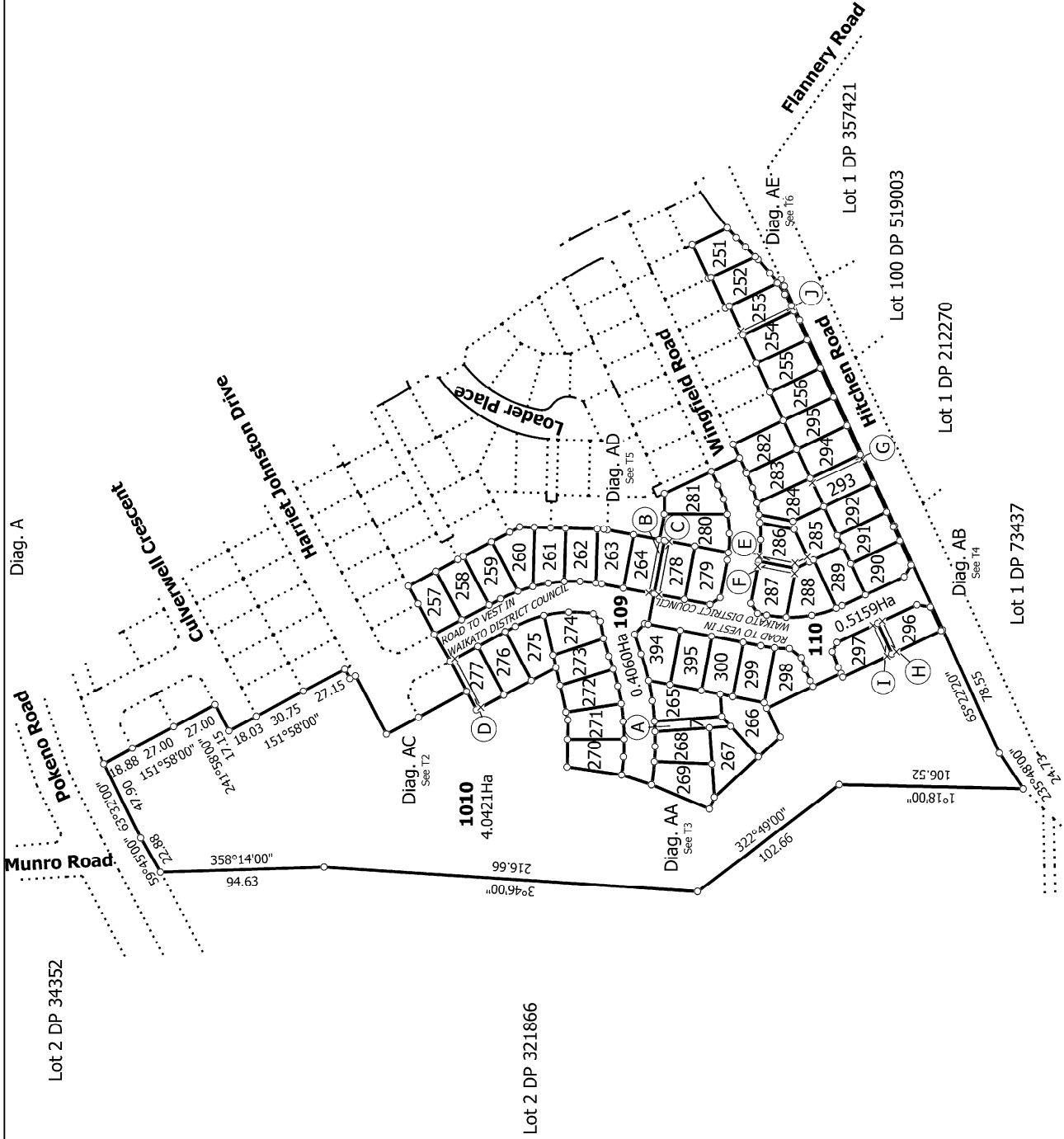
DP 525219

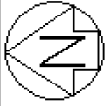
Territorial Authority (the Council)

Waikato District Council – TA Reference: SUB0067/17 and SUB0056/17

Memorandum of Easements in Gross (Pursuant to s243 Resource Management Act 1991)			
Purpose	Shown	Servient Tenement	Grantee
Right to Drain Sewage	A	Lot 7 hereon	Waikato District Council
	C	Lot 278 hereon	
	F	Lot 287 hereon	
	H	Lot 296 hereon	
Right to Drain Water	B	Lot 264 hereon	Waikato District Council
	D	Lot 277 hereon	
	E	Lot 286 hereon	
	G	Lot 293 hereon	
	I	Lot 297 hereon	
	J	Lot 253 hereon	
Right to Convey Water	A	Lot 7 hereon	Waikato District Council

Schedule of Easements in Gross			
Purpose	Shown	Servient Tenement	Grantee
Right to Convey Telecommunications and Computer Media	A	Lot 7 hereon	Chorus New Zealand Ltd





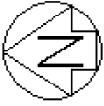
T 2/6

Land District: North Auckland  
 Digitally Generated Plan  
 Generated on: 31/05/2010 2:44pm Page 6 of 10

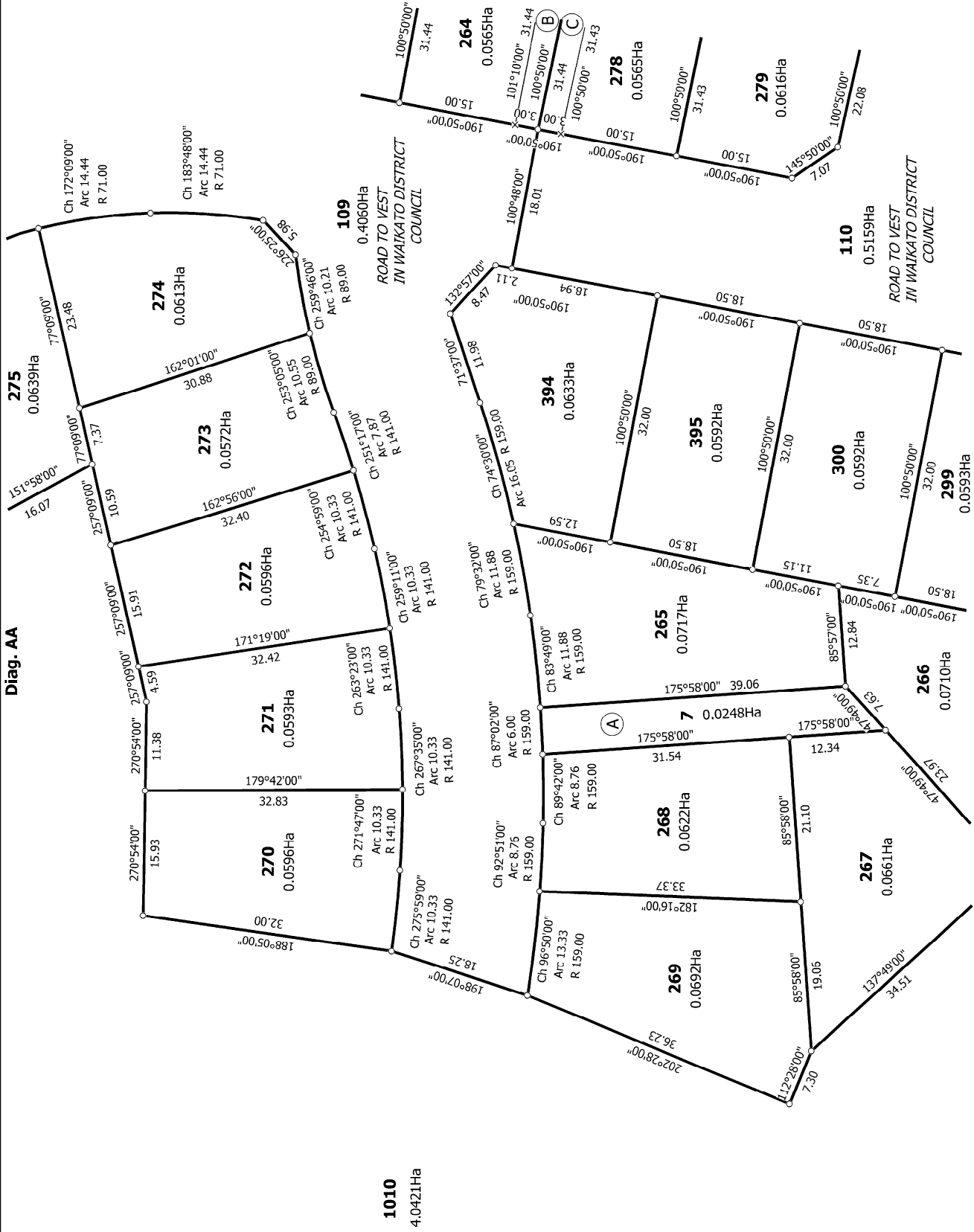
Surveyor: Campbell Lloyd Harvey  
 Firm: Harvey Surveying Limited

**Lots 7, 109, 110, 251 - 300, 394, 395 and 1010 Being a Subdivision of Lot 1007 DP 522950**

**Title Plan  
 LT 525219  
 DRAFT**



Diag. AA



T 3/6

Land District: North Auckland

Digitally Generated Plan

Generated on: 31/05/2018 2:44pm Page 7 of 10

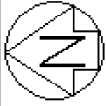
Lots 7, 109, 110, 251 - 300, 394, 395 and 1010 Being a Subdivision of Lot 1007

DP 522950

Surveyor: Campbell Lloyd Harvey

Firm: Harvey Surveying Limited

Title Plan  
LT 525219  
DRAFT



T 4/6

Title Plan  
LT 525219  
DRAFT

Surveyor: Campbell Lloyd Harvey  
Firm: Harvey Surveying Limited

Lots 7, 109, 110, 251 - 300, 394, 395 and 1010 Being a Subdivision of Lot 1007  
DP 522950

Land District: North Auckland  
Digitally Generated Plan  
Generated on: 31/05/2018 2:44pm Page 6 of 10

Lot 2 DP 321866

Lot 1 DP 212270

Lot 1 DP 73437

1010  
4.0421Ha

265  
0.0717Ha

7  
0.0248Ha

268  
0.0622Ha

269  
0.0692Ha

266  
0.0710Ha

267  
0.0661Ha

268  
0.0622Ha

269  
0.0692Ha

270  
0.0630Ha

271  
0.0726Ha

272  
0.0616Ha

299  
0.0593Ha

298  
0.0596Ha

297  
0.0598Ha

296  
0.0601Ha

295  
0.0576Ha

294  
0.0579Ha

293  
0.0582Ha

292  
0.0579Ha

286  
0.0546Ha

287  
0.0630Ha

288  
0.0603Ha

289  
0.0573Ha

285  
0.0623Ha

284  
0.0554Ha

283  
0.0599Ha

282  
0.0630Ha

110  
0.5159Ha

1010  
4.0421Ha

1011  
0.0601Ha

1010  
4.0421Ha

1010  
4.0421Ha

1010  
4.0421Ha

1010  
4.0421Ha

1010  
4.0421Ha







Diag. AE

Lot 162 DP 519891

Lot 250 DP 520562

Lot 249 DP 520562

Lot 248 DP 520562

Lot 247 DP 520562

Lot 246 DP 520562

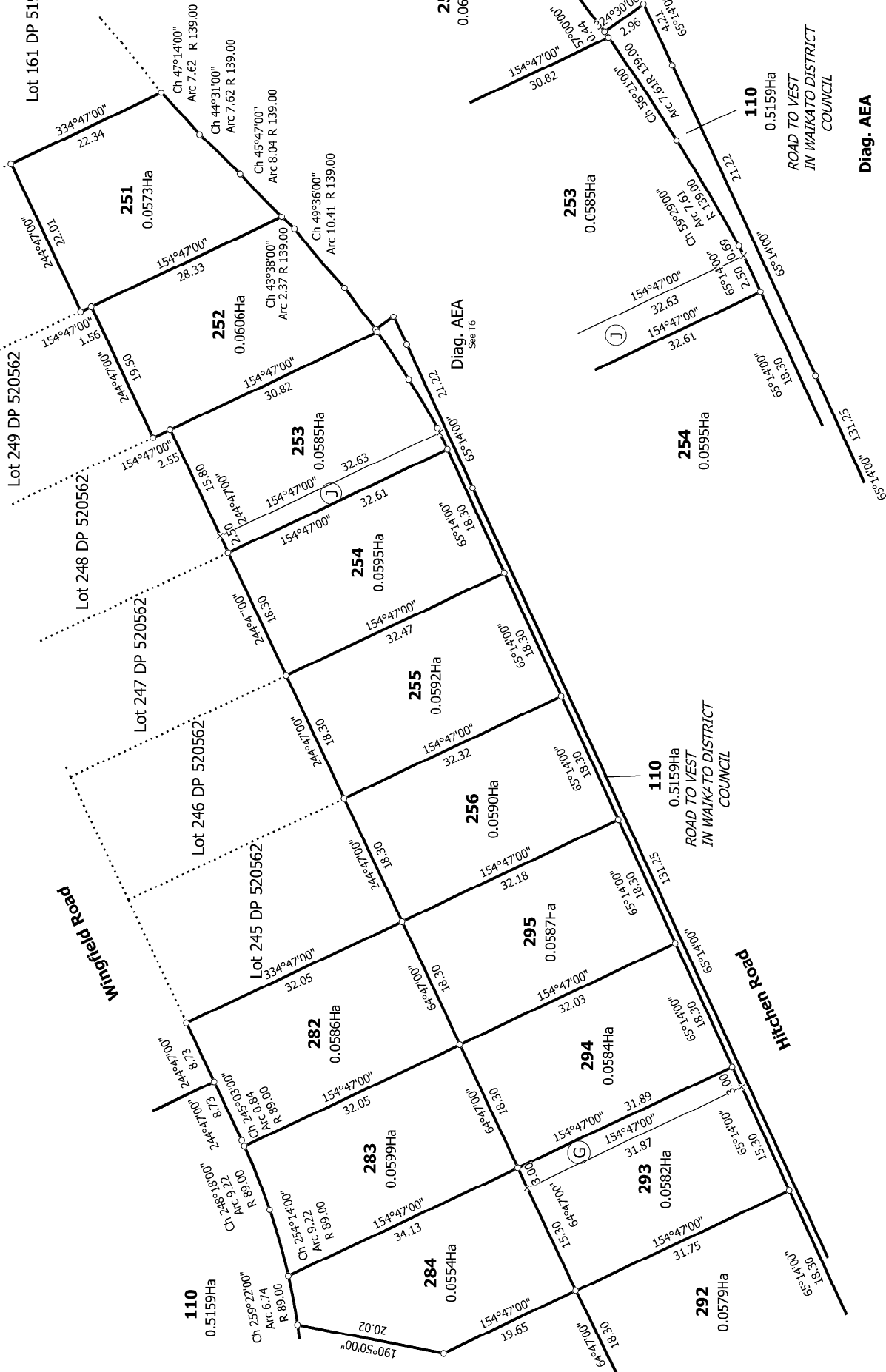
Lot 245 DP 520562

Lot 161 DP 519891

Wingfield Road

Hitchen Road

ROAD TO WEST  
IN WAIKATO DISTRICT  
COUNCIL



T 6/6

Land District: North Auckland  
 Digitally Generated Plan  
 Generated on: 31/05/2018 2:44pm Page 10 of 10

Lots 7, 109, 110, 251 - 300, 394, 395 and 1010 Being a Subdivision of Lot 1007  
 DP 522950

Surveyor: Campbell Lloyd Harvey  
 Firm: Harvey Surveying Limited

Title Plan  
 LT 525219  
 DRAFT

Diag. AEA