



Title Plan - LT 556992

Survey Number LT 556992
Surveyor Reference 1813 - Pokeno Stage 10A-D & 6E
Surveyor Campbell Lloyd Harvey
Survey Firm Civilplan Consultants Limited
Surveyor Declaration

Survey Details

Dataset Description Lots 1-3, 6-9, 11, 15-18, 101, 486-546 and 1014-1015 Being a Subdivision of Lot 7, 1014-1015 DP 548745 and Lot 1015 DP 542214

Status Initiated

Land District North Auckland **Survey Class** Class A

Submitted Date **Survey Approval Date**
Deposit Date

Territorial Authorities

Waikato District

Comprised In

RT 940851
RT 920933
RT 952930

Created Parcels

Parcels	Parcel Intent	Area	RT Reference
Lot 15 Deposited Plan 556992	Fee Simple Title	0.0622 Ha	975800
Lot 16 Deposited Plan 556992	Fee Simple Title	0.0652 Ha	975801
Lot 17 Deposited Plan 556992	Fee Simple Title	0.0656 Ha	975802
Lot 18 Deposited Plan 556992	Fee Simple Title	0.0644 Ha	975803
Lot 486 Deposited Plan 556992	Fee Simple Title	0.0649 Ha	975804
Lot 487 Deposited Plan 556992	Fee Simple Title	0.0649 Ha	975805
Lot 488 Deposited Plan 556992	Fee Simple Title	0.0655 Ha	975806
Lot 489 Deposited Plan 556992	Fee Simple Title	0.0710 Ha	975807
Lot 490 Deposited Plan 556992	Fee Simple Title	0.0750 Ha	975808
Lot 491 Deposited Plan 556992	Fee Simple Title	0.0800 Ha	975809
Lot 101 Deposited Plan 556992	Vesting on Deposit for Local Purpose Reserve	1.0926 Ha	977021
Lot 520 Deposited Plan 556992	Fee Simple Title	0.0633 Ha	975810
Lot 521 Deposited Plan 556992	Fee Simple Title	0.0637 Ha	975811
Lot 522 Deposited Plan 556992	Fee Simple Title	0.0790 Ha	975812
Lot 523 Deposited Plan 556992	Fee Simple Title	0.0695 Ha	975813
Lot 524 Deposited Plan 556992	Fee Simple Title	0.0662 Ha	975814
Lot 525 Deposited Plan 556992	Fee Simple Title	0.0655 Ha	975815
Lot 526 Deposited Plan 556992	Fee Simple Title	0.0596 Ha	975816
Lot 538 Deposited Plan 556992	Fee Simple Title	0.0552 Ha	975817
Lot 539 Deposited Plan 556992	Fee Simple Title	0.0549 Ha	975818

Title Plan - LT 556992

Created Parcels

Parcels	Parcel Intent	Area	RT Reference
Lot 540 Deposited Plan 556992	Fee Simple Title	0.0549 Ha	975819
Lot 541 Deposited Plan 556992	Fee Simple Title	0.0652 Ha	975820
Lot 542 Deposited Plan 556992	Fee Simple Title	0.0610 Ha	975821
Lot 543 Deposited Plan 556992	Fee Simple Title	0.0668 Ha	975822
Lot 544 Deposited Plan 556992	Fee Simple Title	0.0605 Ha	975823
Lot 545 Deposited Plan 556992	Fee Simple Title	0.0617 Ha	975824
Lot 546 Deposited Plan 556992	Fee Simple Title	0.0640 Ha	975825
Lot 527 Deposited Plan 556992	Fee Simple Title	0.0611 Ha	975826
Lot 528 Deposited Plan 556992	Fee Simple Title	0.0608 Ha	975827
Lot 529 Deposited Plan 556992	Fee Simple Title	0.0642 Ha	975828
Lot 530 Deposited Plan 556992	Fee Simple Title	0.0676 Ha	975829
Lot 531 Deposited Plan 556992	Fee Simple Title	0.0581 Ha	975830
Lot 532 Deposited Plan 556992	Fee Simple Title	0.0553 Ha	975831
Lot 533 Deposited Plan 556992	Fee Simple Title	0.0664 Ha	975832
Lot 534 Deposited Plan 556992	Fee Simple Title	0.0552 Ha	975833
Lot 535 Deposited Plan 556992	Fee Simple Title	0.0552 Ha	975834
Lot 536 Deposited Plan 556992	Fee Simple Title	0.0605 Ha	975835
Lot 537 Deposited Plan 556992	Fee Simple Title	0.0943 Ha	975836
Lot 492 Deposited Plan 556992	Fee Simple Title	0.0608 Ha	975837
Lot 493 Deposited Plan 556992	Fee Simple Title	0.0584 Ha	975838
Lot 494 Deposited Plan 556992	Fee Simple Title	0.0637 Ha	975839
Lot 495 Deposited Plan 556992	Fee Simple Title	0.0639 Ha	975840
Lot 496 Deposited Plan 556992	Fee Simple Title	0.0700 Ha	975841
Lot 497 Deposited Plan 556992	Fee Simple Title	0.0666 Ha	975842
Lot 498 Deposited Plan 556992	Fee Simple Title	0.0666 Ha	975843
Lot 499 Deposited Plan 556992	Fee Simple Title	0.0585 Ha	975844
Lot 500 Deposited Plan 556992	Fee Simple Title	0.0585 Ha	975845
Lot 501 Deposited Plan 556992	Fee Simple Title	0.0687 Ha	975846
Lot 502 Deposited Plan 556992	Fee Simple Title	0.0754 Ha	975847
Lot 503 Deposited Plan 556992	Fee Simple Title	0.0585 Ha	975848
Lot 504 Deposited Plan 556992	Fee Simple Title	0.0585 Ha	975849
Lot 505 Deposited Plan 556992	Fee Simple Title	0.0602 Ha	975850
Lot 506 Deposited Plan 556992	Fee Simple Title	0.0712 Ha	975851
Lot 507 Deposited Plan 556992	Fee Simple Title	0.0633 Ha	975852
Lot 508 Deposited Plan 556992	Fee Simple Title	0.0602 Ha	975853
Lot 509 Deposited Plan 556992	Fee Simple Title	0.0658 Ha	975854
Lot 510 Deposited Plan 556992	Fee Simple Title	0.0633 Ha	975855
Lot 511 Deposited Plan 556992	Fee Simple Title	0.0594 Ha	975856
Lot 512 Deposited Plan 556992	Fee Simple Title	0.0594 Ha	975857
Lot 513 Deposited Plan 556992	Fee Simple Title	0.0594 Ha	975858
Lot 514 Deposited Plan 556992	Fee Simple Title	0.0594 Ha	975859
Lot 515 Deposited Plan 556992	Fee Simple Title	0.0594 Ha	975860
Lot 516 Deposited Plan 556992	Fee Simple Title	0.0594 Ha	975861
Lot 517 Deposited Plan 556992	Fee Simple Title	0.0649 Ha	975862

Title Plan - LT 556992

Created Parcels

Parcels	Parcel Intent	Area	RT Reference
Lot 518 Deposited Plan 556992	Fee Simple Title	0.0656 Ha	975863
Lot 519 Deposited Plan 556992	Fee Simple Title	0.0594 Ha	975864
Lot 1 Deposited Plan 556992	Fee Simple Title	0.0243 Ha	Multiple
Lot 2 Deposited Plan 556992	Fee Simple Title	0.0240 Ha	Multiple
Lot 3 Deposited Plan 556992	Fee Simple Title	0.0320 Ha	Multiple
Lot 6 Deposited Plan 556992	Fee Simple Title	0.0774 Ha	975866
Lot 7 Deposited Plan 556992	Vesting on Deposit for Road	0.3743 Ha	
Area A Deposited Plan 556992	Easement		
Area B Deposited Plan 556992	Easement		
Area C Deposited Plan 556992	Easement		
Area F Deposited Plan 556992	Easement		
Area G Deposited Plan 556992	Easement		
Area H Deposited Plan 556992	Easement		
Area I Deposited Plan 556992	Easement		
Area J Deposited Plan 556992	Easement		
Area K Deposited Plan 556992	Easement		
Area L Deposited Plan 556992	Easement		
Area M Deposited Plan 556992	Easement		
Area U Deposited Plan 556992	Easement		
Lot 1015 Deposited Plan 556992	Fee Simple Title	3.6115 Ha	975868
Lot 1014 Deposited Plan 556992	Fee Simple Title	0.2560 Ha	975869
Lot 8 Deposited Plan 556992	Vesting on Deposit for Road	0.2844 Ha	
Lot 9 Deposited Plan 556992	Vesting on Deposit for Road	0.0953 Ha	
Lot 11 Deposited Plan 556992	Vesting on Deposit for Road	0.5696 Ha	
Total Area		<hr/> 10.5882 Ha	

Schedule / Memorandum

Land Registration District

North Auckland

Plan Number

DP 556992

Territorial Authority (the Council)

Waikato District Council – TA Reference: SUB0276/18.03

Memorandum of Easements in Gross (Pursuant to s243 Resource Management Act 1991)			
Purpose	Shown	Burdened Land	Grantee
Right to convey telecommunications	A	Lot 1 hereon	Chorus New Zealand Ltd
	B	Lot 2 hereon	
	C	Lot 3 hereon	
Right to convey electricity	A	Lot 1 hereon	Counties Power Ltd
	B	Lot 2 hereon	
	C	Lot 3 hereon	
Right to convey water	A	Lot 1 hereon	Waikato District Council
	B	Lot 2 hereon	
	C	Lot 3 hereon	
Right to drain sewage and water	A	Lot 1 hereon	Waikato District Council
	B	Lot 2 hereon	
	C	Lot 3 hereon	
	F	Lot 486 hereon	
	G	Lot 487 hereon	
	H	Lot 488 hereon	
	I	Lot 489 hereon	
	J	Lot 490 hereon	
	K	Lot 491 hereon	
Right to drain water	L	Lot 504 hereon	Waikato District Council
	M	Lot 505 hereon	Waikato District Council

Land Registration District

North Auckland

Plan Number

DP 556992

Territorial Authority (the Council)

Waikato District Council – TA Reference: SUB0276/18.03

Amalgamation Conditions:

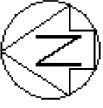
That Lot 1 DP 556992 (legal access) be held as to two undivided one-half shares by the owners of Lots 496 and 497 DP 556992 as tenants in common in the said shares and that individual records of title be issued in accordance therewith (see LINZ request 1521424).

That Lot 2 DP 556992 (legal access) be held as to two undivided one-half shares by the owners of Lots 501 and 502 DP 556992 as tenants in common in the said shares and that individual records of title be issued in accordance therewith (see LINZ request 1521424).

That Lot 3 DP 556992 (legal access) be held as to three undivided one-third shares by the owners of Lots 523 - 525 DP 556992 as tenants in common in the said shares and that individual records of title be issued in accordance therewith (see LINZ request 1521424).

That Lot 104 DP 542214 (legal access) be held as to two undivided one-ninth shares by the owners of Lots 18 and 1014 DP 556992 as tenants in common in the said shares and that individual records of title be issued in accordance therewith (see LINZ request 1527216).

That Lot 105 DP 542214 (legal access) be held as to two undivided one-third shares by the owners of Lots 16 and 17 DP 556992 as tenants in common in the said shares and that individual records of title be issued in accordance therewith (see LINZ request 1579673).

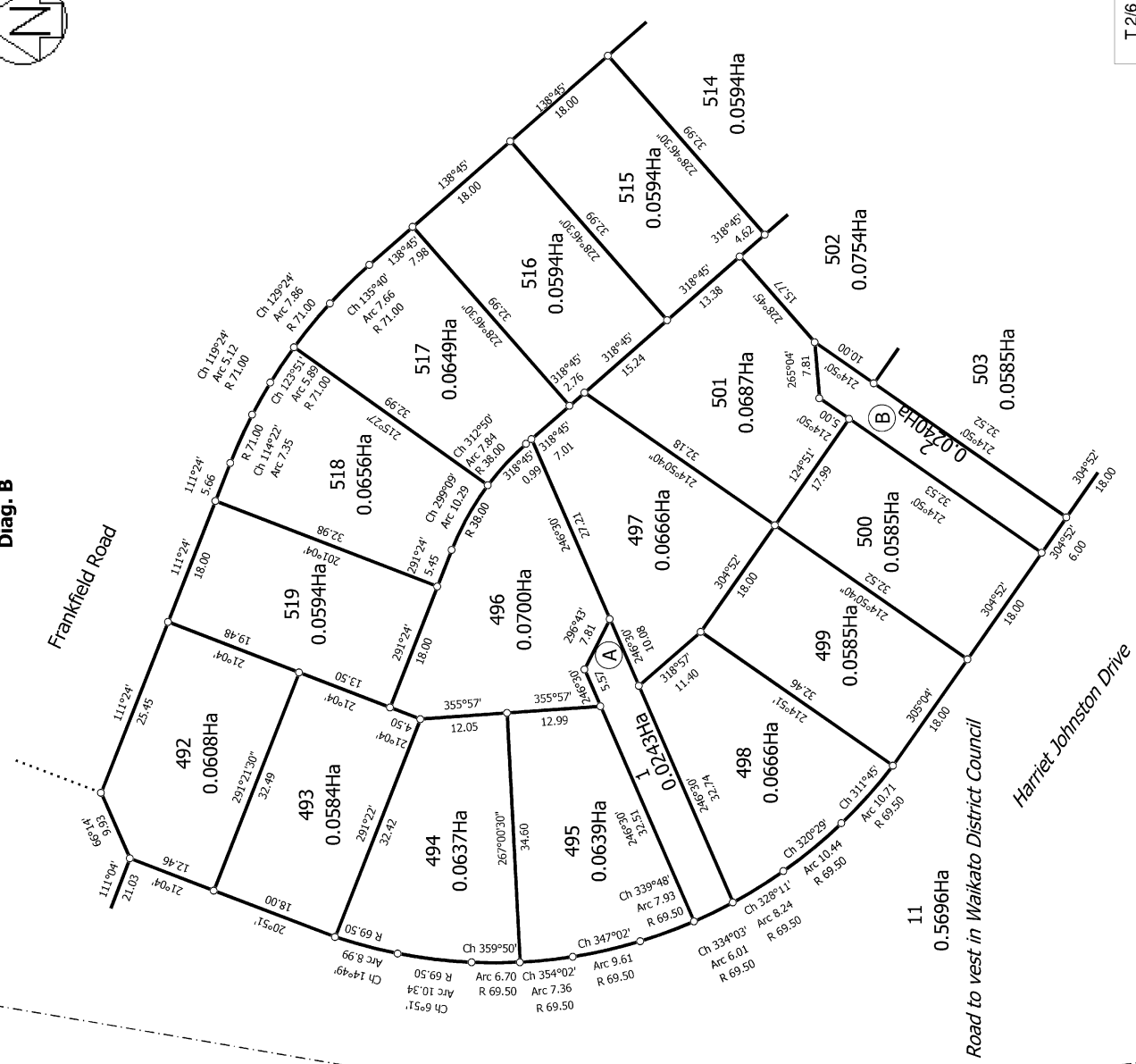


Diag. B

Frankfield Road

Harriet Johnston Drive

Road to west in Waikato District Council



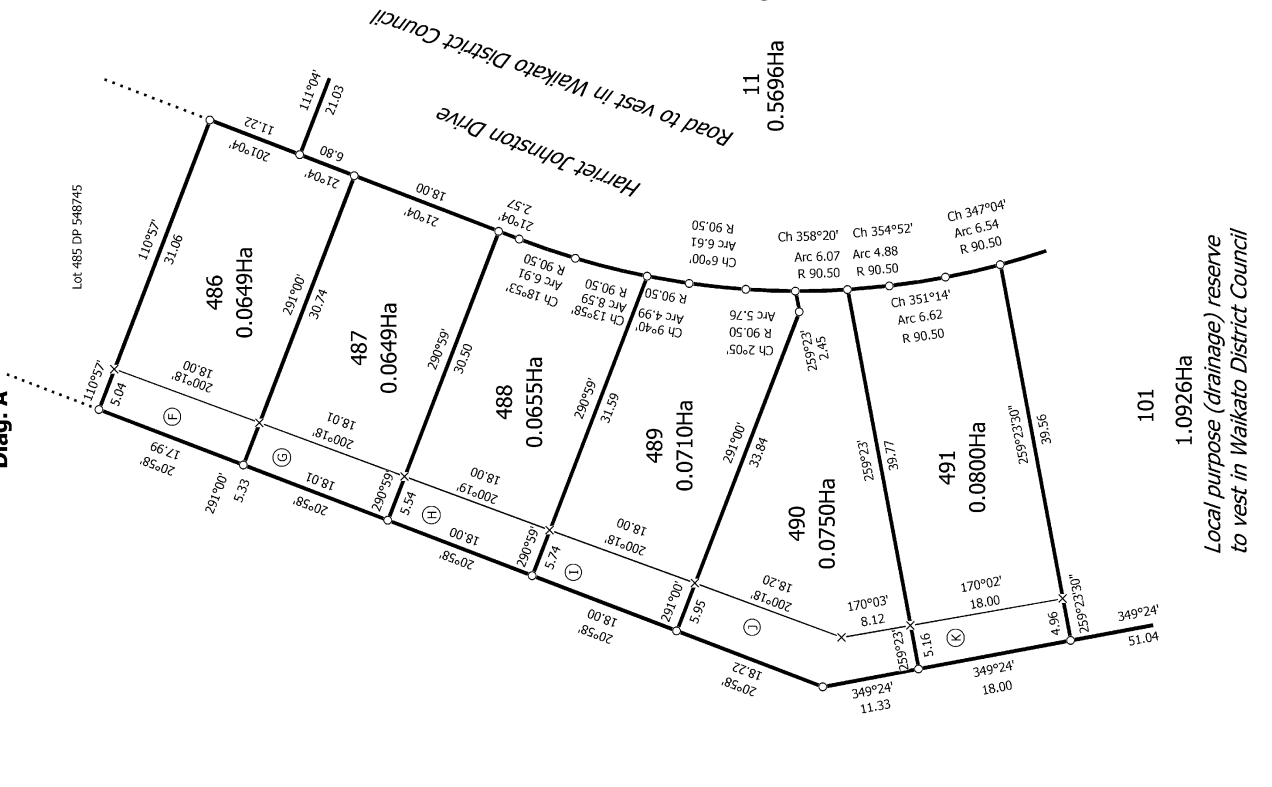
Diag. A

Lot 485 DP 548745

Harriet Johnston Drive

Road to west in Waikato District Council

Local purpose (drainage) reserve
to vest in Waikato District Council



T 2/6

Land District: North Auckland

Digitally Generated Plan

Generated on: 17/12/2020 09:46am Page 7 of 11

Lots 1-3, 6-9, 11, 15-18, 101, 486-546 and 1014-1015 Being a Subdivision of Lot

7, 1014-1015 DP 548745 and Lot 1015 DP 542214

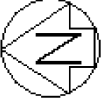
Surveyor: Campbell Lloyd Harvey

Firm: Civilplan Consultants Limited

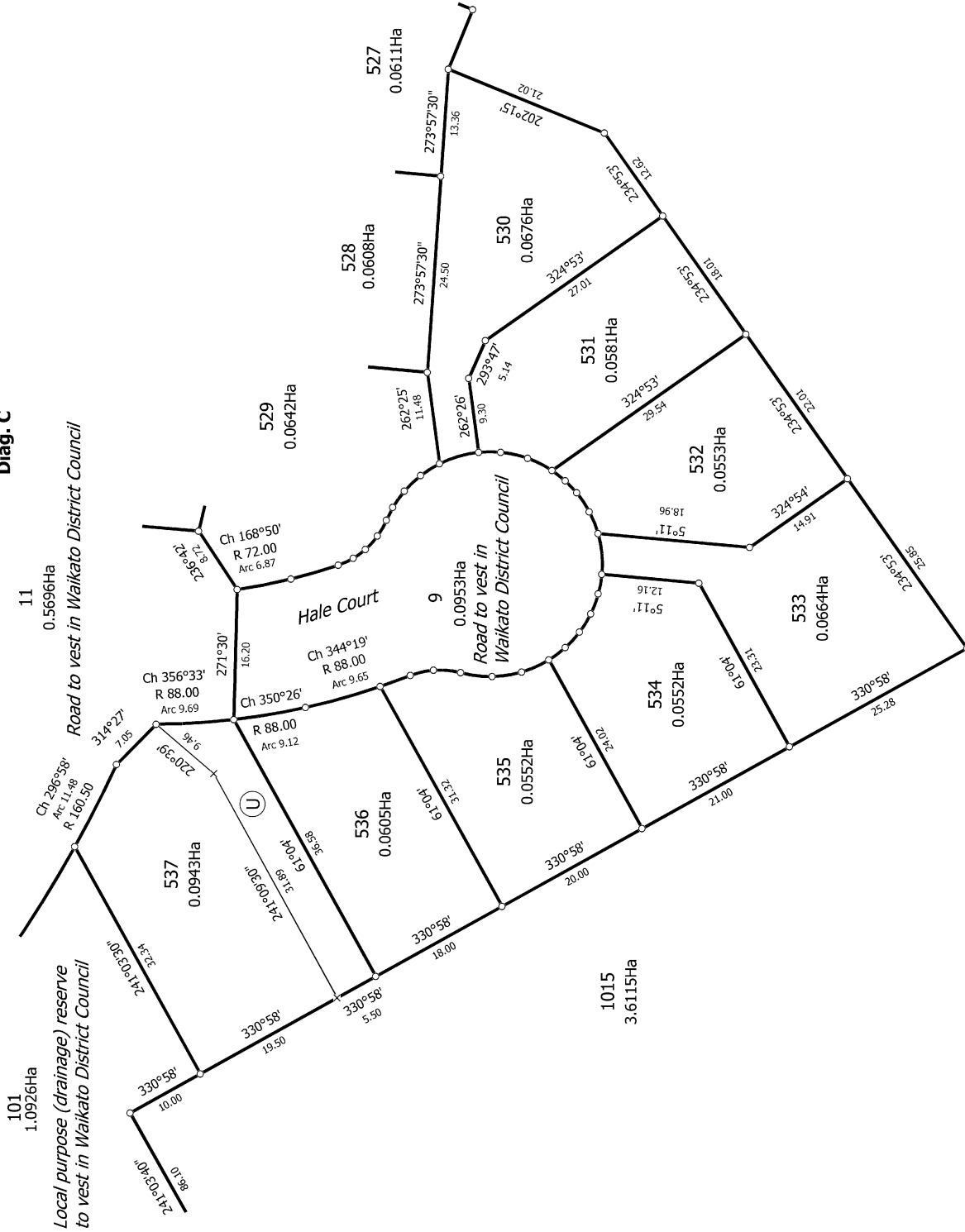
Title Plan

LT 556992

DRAFT

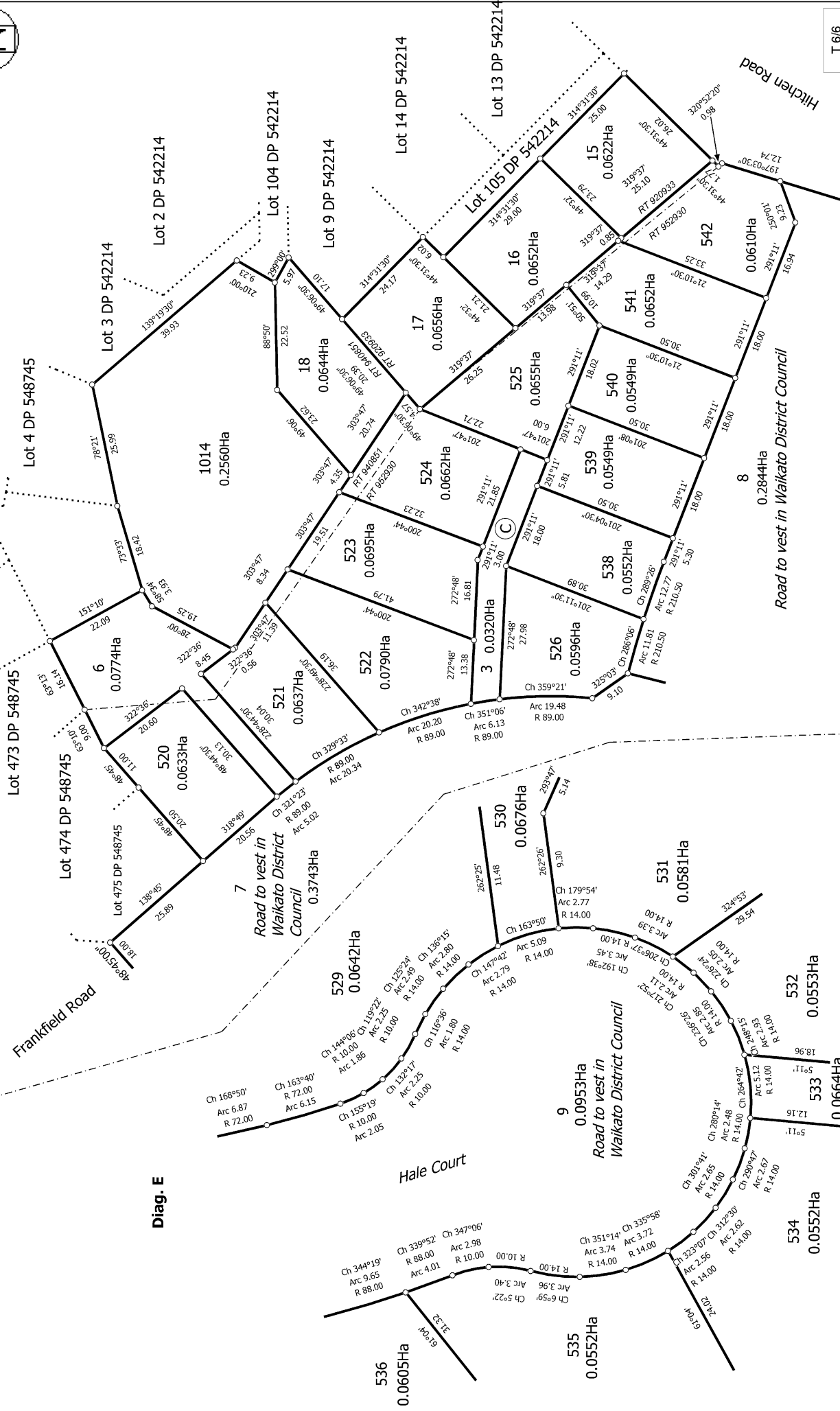


Diag. C





Diag. G



Diag. E

Title Plan
LT 556992
DRAFT

Surveyor: Campbell Lloyd Harvey
Firm: Civilplan Consultants Limited

Lots 1-3, 6-9, 11, 15-18, 101, 486-546 and 1014-1015 Being a Subdivision of Lot 7, 1014-1015 DP 548745 and Lot 1015 DP 542214

Land District: North Auckland
Digitally Generated Plan
Generated on: 17/12/2020 09:46am Page 11 of 11