



# Title Plan - LT 569694

---

**Survey Number** LT 569694  
**Surveyor Reference** 1813 STG 13 B1B2  
**Surveyor** Campbell Lloyd Harvey  
**Survey Firm** Civilplan Consultants Limited  
**Surveyor Declaration**

---

## Survey Details

**Dataset Description** Lots 5-9, 11, 14, 17, 752 - 809, 2002 Being a Subdivision of Lot 1000 DP 569466  
**Status** Initiated  
**Land District** North Auckland  
**Submitted Date**  
**Survey Class** Class A  
**Survey Approval Date**  
**Deposit Date**

---

## Territorial Authorities

Waikato District

---

## Created Parcels

Parcels	Parcel Intent	Area	RT Reference
Lot 5 Deposited Plan 569694	Fee Simple Title	0.0293 Ha	1027705
Lot 6 Deposited Plan 569694	Fee Simple Title	0.0294 Ha	1027706
Lot 7 Deposited Plan 569694	Fee Simple Title	0.0180 Ha	1027707
Lot 8 Deposited Plan 569694	Fee Simple Title	0.0180 Ha	1027708
Lot 11 Deposited Plan 569694	Fee Simple Title	0.8616 Ha	1027709
Lot 14 Deposited Plan 569694	Vesting on Deposit for Road	0.6458 Ha	1027710
Lot 760 Deposited Plan 569694	Fee Simple Title	0.0472 Ha	1027711
Lot 761 Deposited Plan 569694	Fee Simple Title	0.0508 Ha	1027712
Lot 762 Deposited Plan 569694	Fee Simple Title	0.0490 Ha	1027713
Lot 763 Deposited Plan 569694	Fee Simple Title	0.0474 Ha	1027714
Lot 764 Deposited Plan 569694	Fee Simple Title	0.0474 Ha	1027715
Lot 765 Deposited Plan 569694	Fee Simple Title	0.0491 Ha	1027716
Lot 766 Deposited Plan 569694	Fee Simple Title	0.0491 Ha	1027717
Lot 767 Deposited Plan 569694	Fee Simple Title	0.0475 Ha	1027718
Lot 768 Deposited Plan 569694	Fee Simple Title	0.0506 Ha	1027719
Lot 769 Deposited Plan 569694	Fee Simple Title	0.0461 Ha	1027720
Lot 770 Deposited Plan 569694	Fee Simple Title	0.0484 Ha	1027721
Lot 771 Deposited Plan 569694	Fee Simple Title	0.0506 Ha	1027722
Lot 772 Deposited Plan 569694	Fee Simple Title	0.0506 Ha	1027723
Lot 773 Deposited Plan 569694	Fee Simple Title	0.0506 Ha	1027724
Lot 774 Deposited Plan 569694	Fee Simple Title	0.0591 Ha	1027725
Lot 775 Deposited Plan 569694	Fee Simple Title	0.0692 Ha	1027726
Lot 776 Deposited Plan 569694	Fee Simple Title	0.0562 Ha	1027727
Lot 777 Deposited Plan 569694	Fee Simple Title	0.0562 Ha	1027728
Lot 778 Deposited Plan 569694	Fee Simple Title	0.0602 Ha	1027729
Lot 779 Deposited Plan 569694	Fee Simple Title	0.0535 Ha	1027730

# Title Plan - LT 569694

---

## Created Parcels

Parcels	Parcel Intent	Area	RT Reference
Lot 780 Deposited Plan 569694	Fee Simple Title	0.0492 Ha	1027731
Lot 781 Deposited Plan 569694	Fee Simple Title	0.0497 Ha	1027732
Lot 782 Deposited Plan 569694	Fee Simple Title	0.0501 Ha	1027733
Lot 783 Deposited Plan 569694	Fee Simple Title	0.0506 Ha	1027734
Lot 784 Deposited Plan 569694	Fee Simple Title	0.0465 Ha	1027735
Lot 785 Deposited Plan 569694	Fee Simple Title	0.0457 Ha	1027736
Lot 786 Deposited Plan 569694	Fee Simple Title	0.0511 Ha	1027737
Lot 787 Deposited Plan 569694	Fee Simple Title	0.0511 Ha	1027738
Lot 788 Deposited Plan 569694	Fee Simple Title	0.0611 Ha	1027739
Lot 789 Deposited Plan 569694	Fee Simple Title	0.0608 Ha	1027740
Lot 790 Deposited Plan 569694	Fee Simple Title	0.0511 Ha	1027741
Lot 791 Deposited Plan 569694	Fee Simple Title	0.0511 Ha	1027742
Lot 792 Deposited Plan 569694	Fee Simple Title	0.0511 Ha	1027743
Lot 793 Deposited Plan 569694	Fee Simple Title	0.0511 Ha	1027744
Lot 794 Deposited Plan 569694	Fee Simple Title	0.0606 Ha	1027748
Lot 795 Deposited Plan 569694	Fee Simple Title	0.0603 Ha	1027749
Lot 796 Deposited Plan 569694	Fee Simple Title	0.0511 Ha	1027750
Lot 797 Deposited Plan 569694	Fee Simple Title	0.0511 Ha	1027751
Lot 798 Deposited Plan 569694	Fee Simple Title	0.0681 Ha	1027752
Lot 799 Deposited Plan 569694	Fee Simple Title	0.0663 Ha	1027753
Lot 800 Deposited Plan 569694	Fee Simple Title	0.0662 Ha	1027754
Lot 801 Deposited Plan 569694	Fee Simple Title	0.0661 Ha	1027755
Lot 802 Deposited Plan 569694	Fee Simple Title	0.0659 Ha	1027756
Lot 2002 Deposited Plan 569694	Fee Simple Title	5.1340 Ha	1027757
Area E Deposited Plan 569694	Easement		
Area F Deposited Plan 569694	Easement		
Area G Deposited Plan 569694	Easement		
Area H Deposited Plan 569694	Easement		
Area V Deposited Plan 569694	Easement		
Area X Deposited Plan 569694	Easement		
Area Y Deposited Plan 569694	Easement		
Area Z Deposited Plan 569694	Easement		
Area BB Deposited Plan 569694	Easement		
Area CC Deposited Plan 569694	Easement		
Area DD Deposited Plan 569694	Easement		
Area EE Deposited Plan 569694	Easement		
Area FF Deposited Plan 569694	Easement		
Lot 752 Deposited Plan 569694	Fee Simple Title	0.0614 Ha	
Lot 753 Deposited Plan 569694	Fee Simple Title	0.0614 Ha	
Lot 754 Deposited Plan 569694	Fee Simple Title	0.0614 Ha	
Lot 755 Deposited Plan 569694	Fee Simple Title	0.0614 Ha	
Lot 756 Deposited Plan 569694	Fee Simple Title	0.0609 Ha	
Lot 757 Deposited Plan 569694	Fee Simple Title	0.0670 Ha	
Lot 758 Deposited Plan 569694	Fee Simple Title	0.0613 Ha	

# Title Plan - LT 569694

---

## Created Parcels

Parcels	Parcel Intent	Area	RT Reference
Lot 759 Deposited Plan 569694	Fee Simple Title	0.0610 Ha	
Lot 803 Deposited Plan 569694	Fee Simple Title	0.0526 Ha	
Lot 804 Deposited Plan 569694	Fee Simple Title	0.0537 Ha	
Lot 805 Deposited Plan 569694	Fee Simple Title	0.0538 Ha	
Lot 806 Deposited Plan 569694	Fee Simple Title	0.0520 Ha	
Lot 807 Deposited Plan 569694	Fee Simple Title	0.0611 Ha	
Lot 808 Deposited Plan 569694	Fee Simple Title	0.0621 Ha	
Lot 809 Deposited Plan 569694	Fee Simple Title	0.0632 Ha	
Lot 17 Deposited Plan 569694	Vesting on Deposit for Road	1.1110 Ha	
Area AA Deposited Plan 569694	Easement		
Area I Deposited Plan 569694	Easement		
Lot 9 Deposited Plan 569694	Fee Simple Title	0.0201 Ha	
Area W Deposited Plan 569694	Easement		
<b>Total Area</b>		<u>11.0763 Ha</u>	

# Schedule / Memorandum

Land Registration District

**North Auckland**

Plan Number

**DP 569694**

Territorial Authority (the Council)

Auckland Council – TA Reference: SUB0132/19.02

<b>Memorandum of Easements in Gross</b> (Pursuant to s243 Resource Management Act 1991)			
Purpose	Shown	Burdened Land	Grantee
Right to convey water	E	Lot 5 hereon	Waikato District Council
	F	Lot 6 hereon	
	G	Lot 7 hereon	
	H	Lot 8 hereon	
	I	Lot 9 hereon	
Right to drain sewage	E	Lot 5 hereon	
	F	Lot 6 hereon	
	G	Lot 7 hereon	
	H	Lot 8 hereon	
	V	Lot 785 hereon	
	W	Lot 755 hereon	
	X	Lot 768 hereon	
	Y	Lot 769 hereon	
	Z	Lot 798 hereon	
	AA	Lot 806 hereon	
	BB	Lot 802 hereon	
CC	Lot 788 hereon		

## Schedule / Memorandum

---

Right to drain sewage	DD	Lot 789 hereon	Waikato District Council
	EE	Lot 794 hereon	
	FF	Lot 795 hereon	

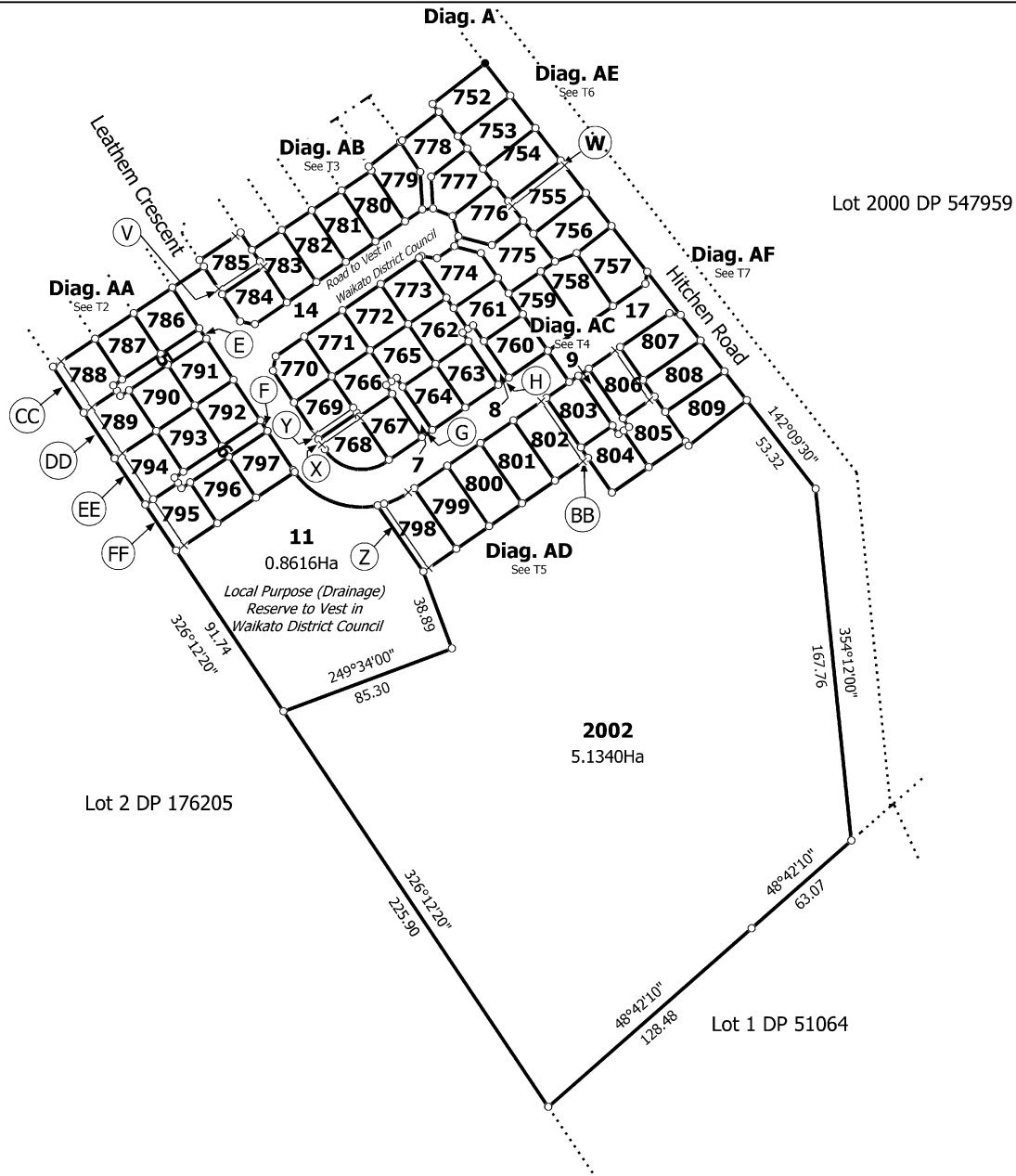
That Lot 5 hereon (legal access) be held as to four undivided one-quarter shares by the owners of Lots 787-790 DP 569694 as tenants in common in the said shares and that individual records of title be issued in accordance therewith.

That Lot 6 hereon (legal access) be held as to four undivided one-quarter shares by the owners of Lots 793-796 DP 569694 as tenants in common in the said shares and that individual records of title be issued in accordance therewith.

That Lot 7 hereon (legal access) be held as to two undivided one-half shares by the owners of Lots 765 & 766 DP 569694 as tenants in common in the said shares and that individual records of title be issued in accordance therewith.

That Lot 8 hereon (legal access) be held as to two undivided one-half shares by the owners of Lots 761 & 762 DP 569694 as tenants in common in the said shares and that individual records of title be issued in accordance therewith.

That Lot 9 hereon (legal access) be held as to two undivided one-half shares by the owners of Lots 804 & 805 DP 569694 as tenants in common in the said shares and that individual records of title be issued in accordance therewith.

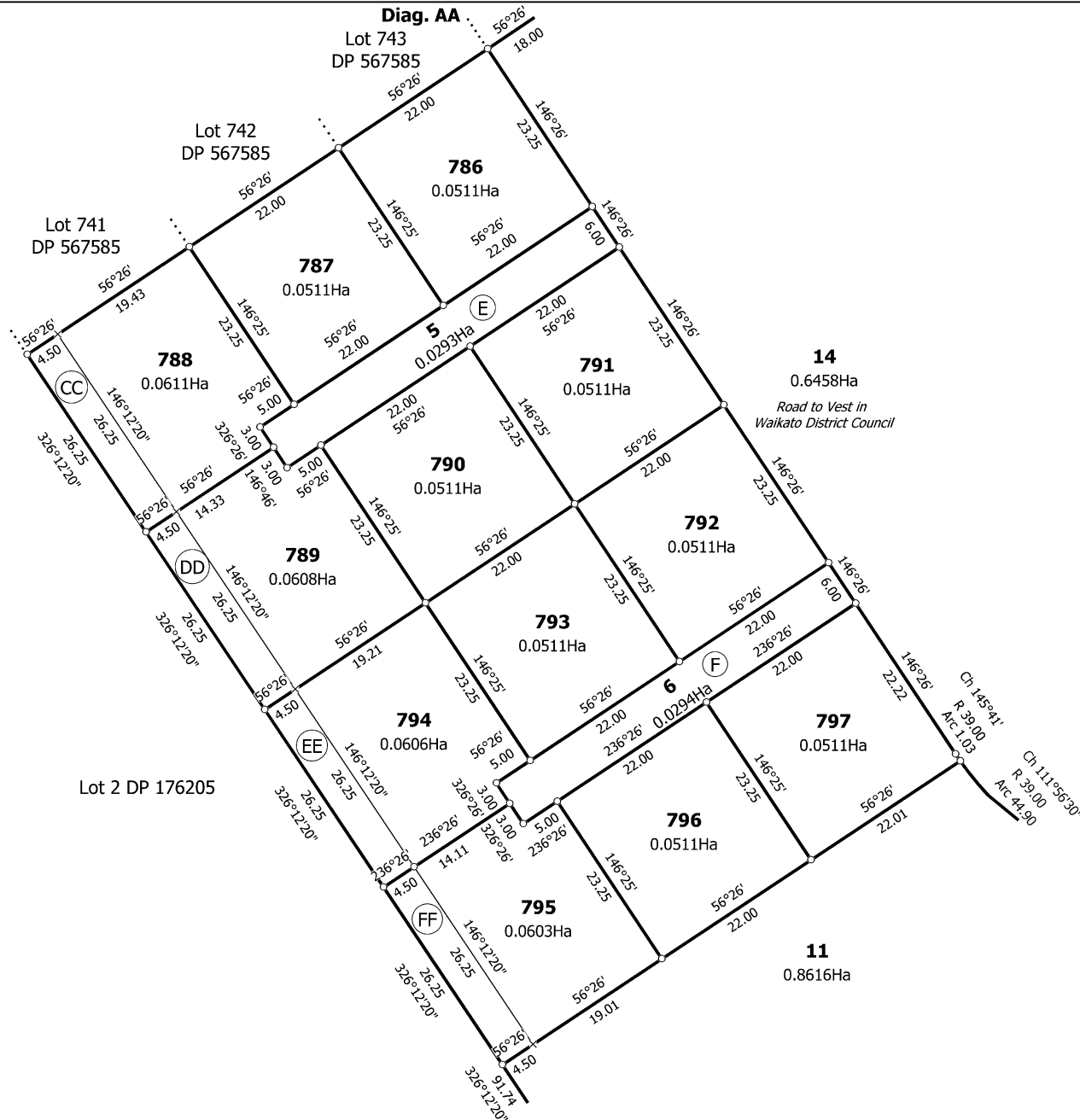


Lot 2000 DP 547959

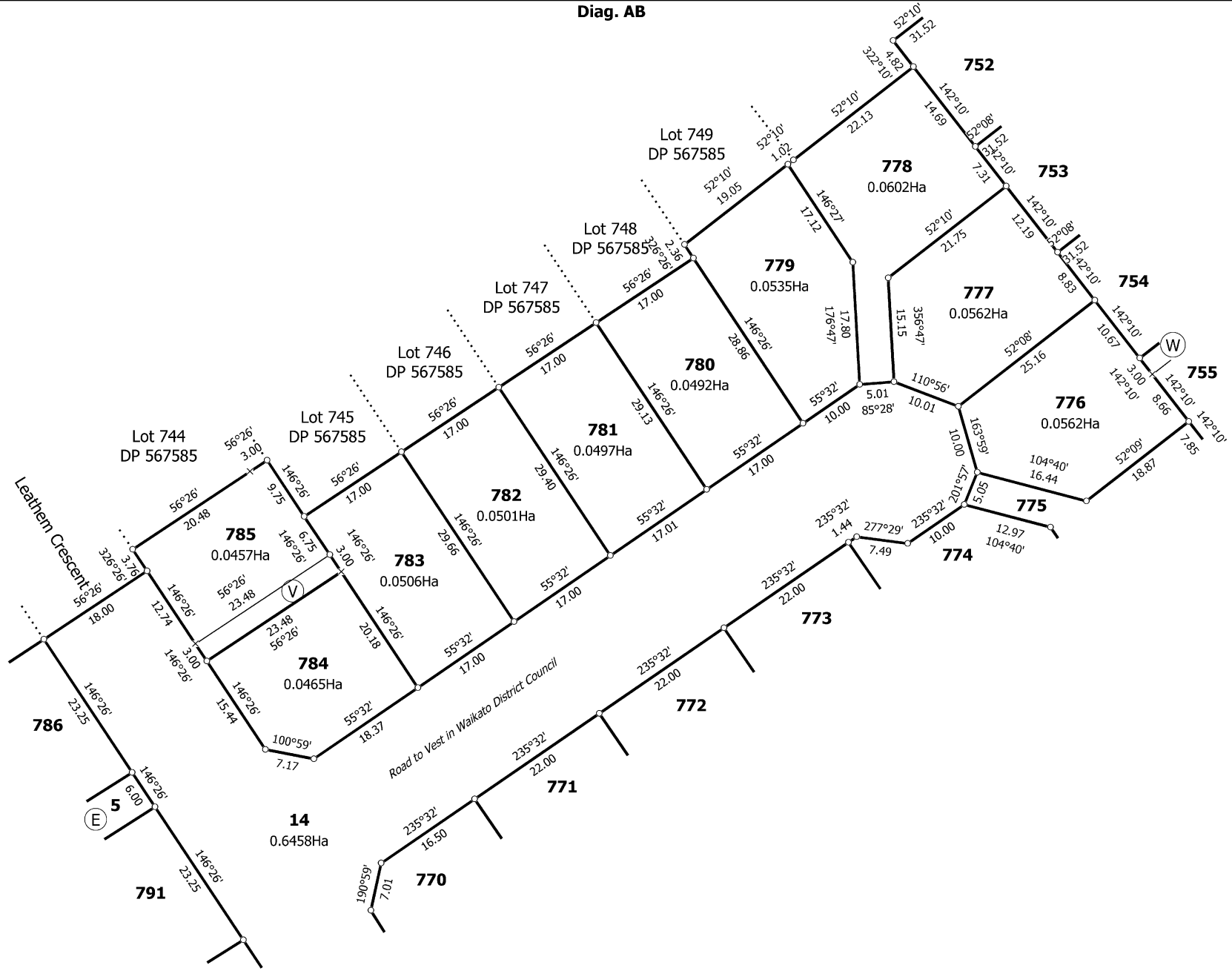
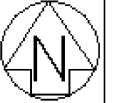
Lot 2 DP 176205

**2002**  
5.1340Ha

Lot 1 DP 51064

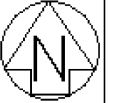


Diag. AB





Diag. AC



T 4/7

Land District: North Auckland

Lots 5-9, 11, 14, 17, 752 - 809, 2002 Being a Subdivision of Lot 1000 DP 569466

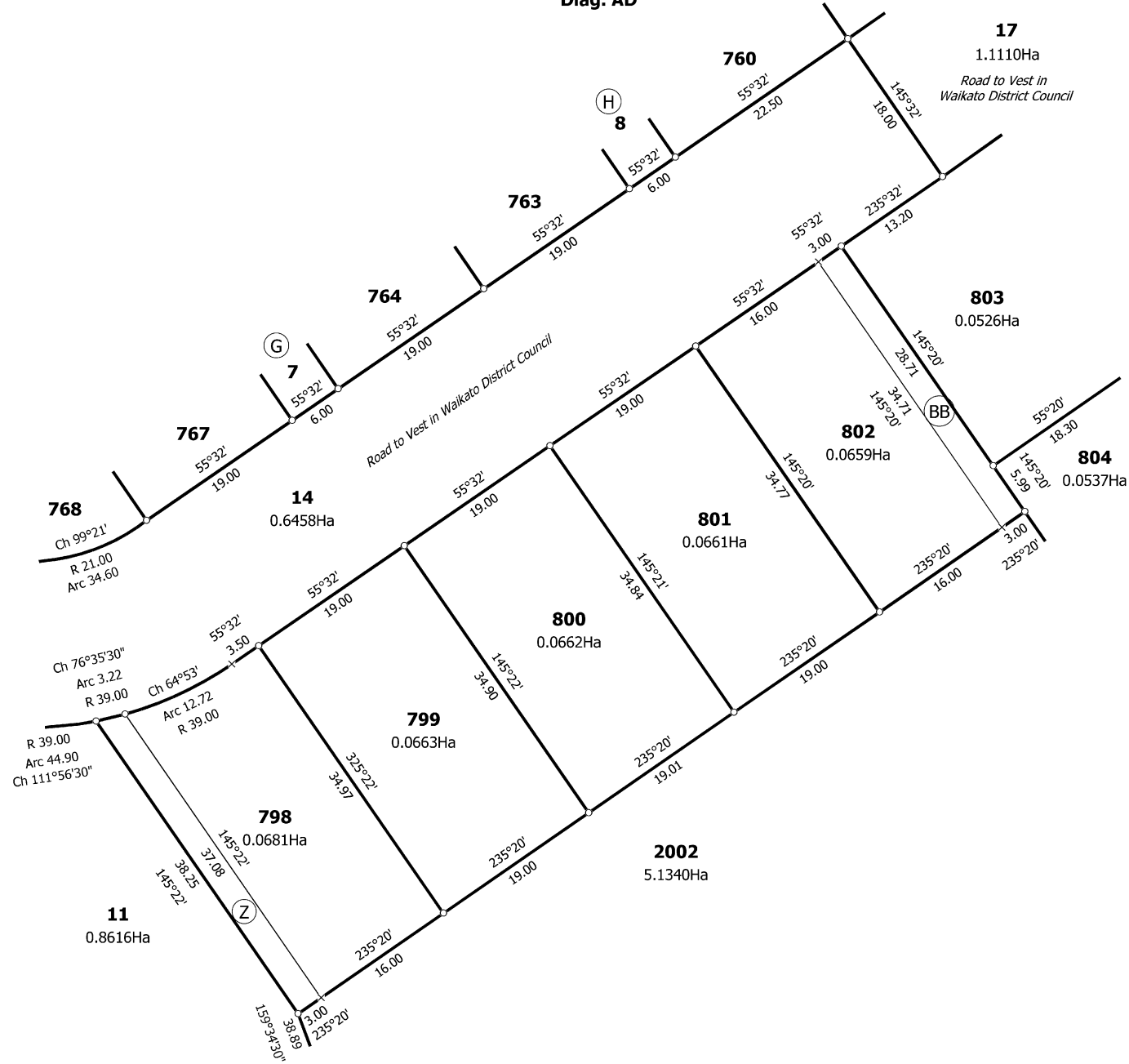
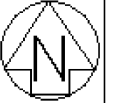
Surveyor: Campbell Lloyd Harvey  
Firm: Civilplan Consultants Limited

Title Plan  
LT 569694  
DRAFT

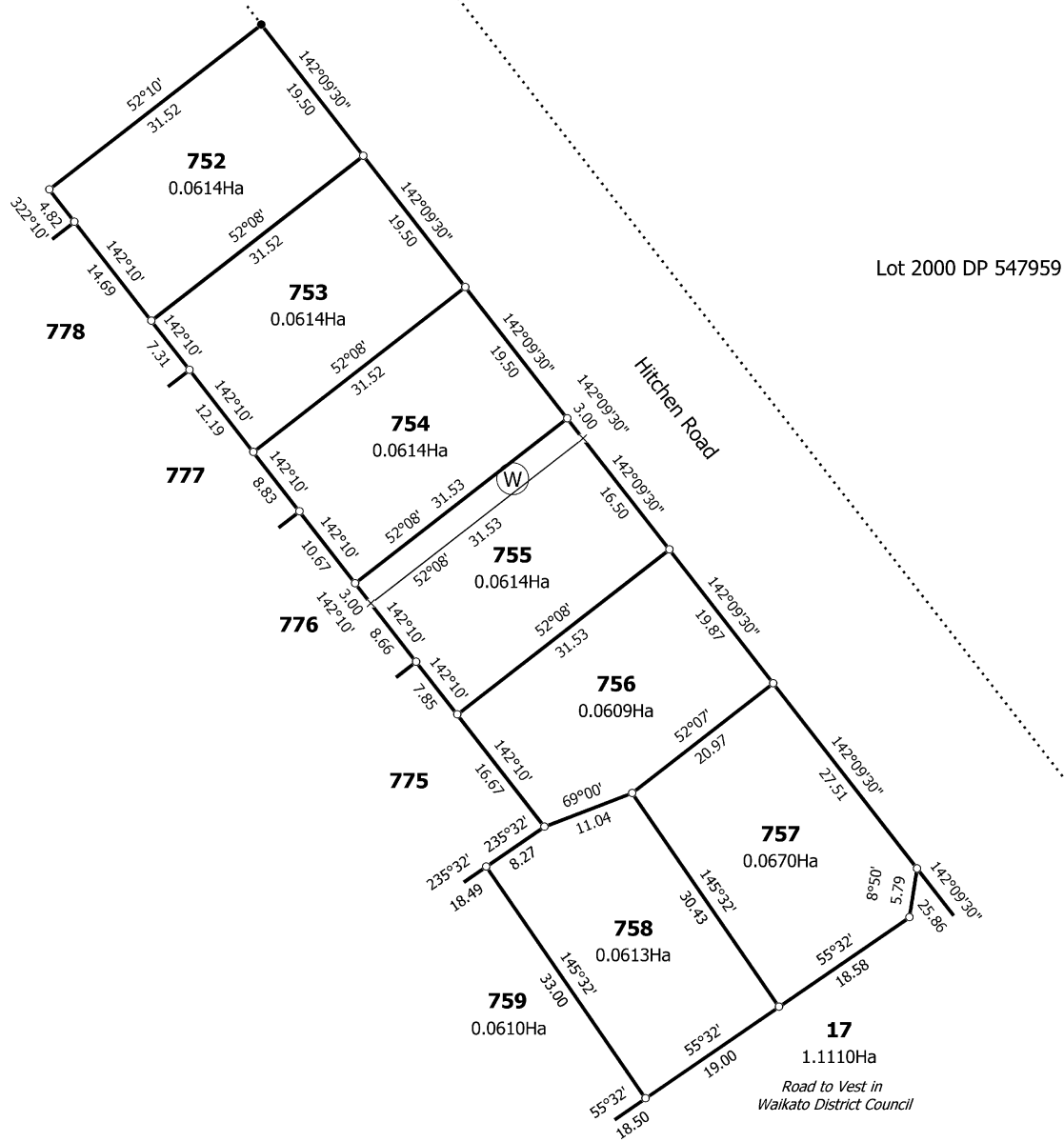
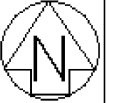
Digitally Generated Plan

Generated on: 18/01/2022 4:20pm Page 9 of 12

Diag. AD



Diag. AE





Diag. AF

Lot 2000 DP 547959



T 7/7

Land District: North Auckland

Lots 5-9, 11, 14, 17, 752 - 809, 2002 Being a Subdivision of Lot 1000 DP 569466

Surveyor: Campbell Lloyd Harvey  
Firm: Civilplan Consultants Limited

Title Plan  
LT 569694  
DRAFT

Digitally Generated Plan  
Generated on: 18/01/2022 4:20pm Page 12 of 12