



Title Plan - LT 590484

Survey Number LT 590484
Surveyor Reference 1813 - Pokeno Stage 17 A and C
Surveyor Campbell Lloyd Harvey
Survey Firm Civilplan Consultants Limited
Surveyor Declaration

Survey Details

Dataset Description Lots 1, 4, 5, 10, 16, 892-917, 919-925 and 2000 Being a Subdivision of Lot 2003 DP 579446
Status Initiated
Land District North Auckland
Submitted Date
Survey Class Class A
Survey Approval Date
Deposit Date

Territorial Authorities

Waikato District

Comprised In

RT 1076228

Created Parcels

Parcels	Parcel Intent	Area	RT Reference
Lot 1 Deposited Plan 590484	Vesting on Deposit for Road	0.3072 Ha	
Lot 4 Deposited Plan 590484	Vesting on Deposit for Local Purpose Reserve	0.4124 Ha	1128999
Lot 5 Deposited Plan 590484	Vesting on Deposit for Local Purpose Reserve	0.0303 Ha	1129000
Lot 10 Deposited Plan 590484	Vesting on Deposit for Road	0.4211 Ha	
Lot 16 Deposited Plan 590484	Vesting on Deposit for Local Purpose Reserve	0.2008 Ha	1129003
Lot 892 Deposited Plan 590484	Fee Simple Title	0.0554 Ha	1129004
Lot 893 Deposited Plan 590484	Fee Simple Title	0.0540 Ha	1129005
Lot 894 Deposited Plan 590484	Fee Simple Title	0.0540 Ha	1129006
Lot 895 Deposited Plan 590484	Fee Simple Title	0.0540 Ha	1129007
Lot 896 Deposited Plan 590484	Fee Simple Title	0.0540 Ha	1129008
Lot 897 Deposited Plan 590484	Fee Simple Title	0.0621 Ha	1129009
Lot 898 Deposited Plan 590484	Fee Simple Title	0.0586 Ha	1129010
Lot 899 Deposited Plan 590484	Fee Simple Title	0.0573 Ha	1129011
Lot 900 Deposited Plan 590484	Fee Simple Title	0.0669 Ha	1129012
Lot 901 Deposited Plan 590484	Fee Simple Title	0.0669 Ha	1129013
Lot 902 Deposited Plan 590484	Fee Simple Title	0.0619 Ha	1129014
Lot 903 Deposited Plan 590484	Fee Simple Title	0.0630 Ha	1129015
Lot 904 Deposited Plan 590484	Fee Simple Title	0.0619 Ha	1129016
Lot 905 Deposited Plan 590484	Fee Simple Title	0.0634 Ha	1129017
Lot 906 Deposited Plan 590484	Fee Simple Title	0.0670 Ha	1129018

Title Plan - LT 590484

Created Parcels

Parcels	Parcel Intent	Area	RT Reference
Lot 907 Deposited Plan 590484	Fee Simple Title	0.0669 Ha	1129019
Lot 908 Deposited Plan 590484	Fee Simple Title	0.0653 Ha	1129020
Lot 909 Deposited Plan 590484	Fee Simple Title	0.0593 Ha	1129021
Lot 910 Deposited Plan 590484	Fee Simple Title	0.0601 Ha	1129022
Lot 911 Deposited Plan 590484	Fee Simple Title	0.0576 Ha	1129023
Lot 912 Deposited Plan 590484	Fee Simple Title	0.0604 Ha	1129024
Lot 913 Deposited Plan 590484	Fee Simple Title	0.0559 Ha	1129025
Lot 914 Deposited Plan 590484	Fee Simple Title	0.0560 Ha	1129026
Lot 915 Deposited Plan 590484	Fee Simple Title	0.0560 Ha	1129027
Lot 916 Deposited Plan 590484	Fee Simple Title	0.0560 Ha	1129028
Lot 917 Deposited Plan 590484	Fee Simple Title	0.0559 Ha	1129029
Lot 919 Deposited Plan 590484	Fee Simple Title	0.1093 Ha	1129030
Lot 920 Deposited Plan 590484	Fee Simple Title	0.0949 Ha	1129031
Lot 921 Deposited Plan 590484	Fee Simple Title	0.0904 Ha	1129032
Lot 922 Deposited Plan 590484	Fee Simple Title	0.0872 Ha	1129033
Lot 923 Deposited Plan 590484	Fee Simple Title	0.0817 Ha	1129034
Lot 924 Deposited Plan 590484	Fee Simple Title	0.0655 Ha	1129035
Lot 925 Deposited Plan 590484	Fee Simple Title	0.0581 Ha	1129036
Lot 2000 Deposited Plan 590484	Fee Simple Title	9.5949 Ha	1129037
Area A Deposited Plan 590484	Easement		
Area B Deposited Plan 590484	Easement		
Area C Deposited Plan 590484	Easement		
Area D Deposited Plan 590484	Easement		
Area E Deposited Plan 590484	Easement		
Area F Deposited Plan 590484	Easement		
Area V Deposited Plan 590484	Easement		
Area W Deposited Plan 590484	Easement		
Total Area		13.1036 Ha	

Schedule / Memorandum

Land Registration District

North Auckland

Survey Number

LT 590484

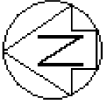
Territorial Authority (the Council)

Waikato District

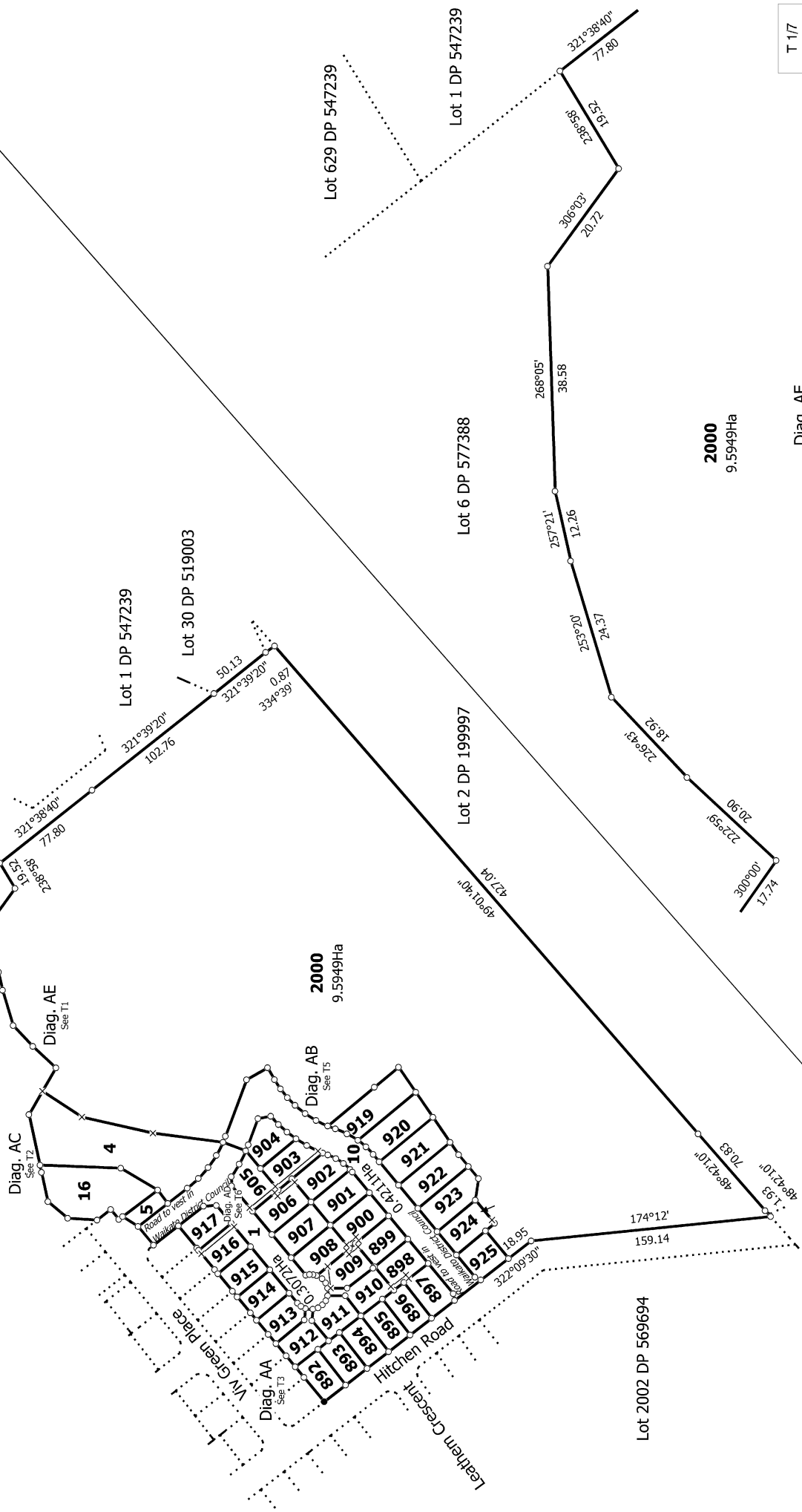
Memorandum of Easements in Gross

Last Edited: 10 Oct 2023 13:48:58

<u>Purpose</u>	<u>Shown</u>	<u>Burdened Land</u> <u>(Servient Tenement)</u>	<u>Grantee</u>
Right to drain water	A	Lot 916	Waikato District Council
	B	Lot 905	Waikato District Council
	C	Lot 903	Waikato District Council
	E	Lot 900	Waikato District Council
	V	Lot 898	Waikato District Council
	W	Lot 909	Waikato District Council
Right to drain sewage	D	Lot 906	Waikato District Council
	F	Lot 909	Waikato District Council



Diag. A



T 1/7

Title Plan
LT 590484
DRAFT

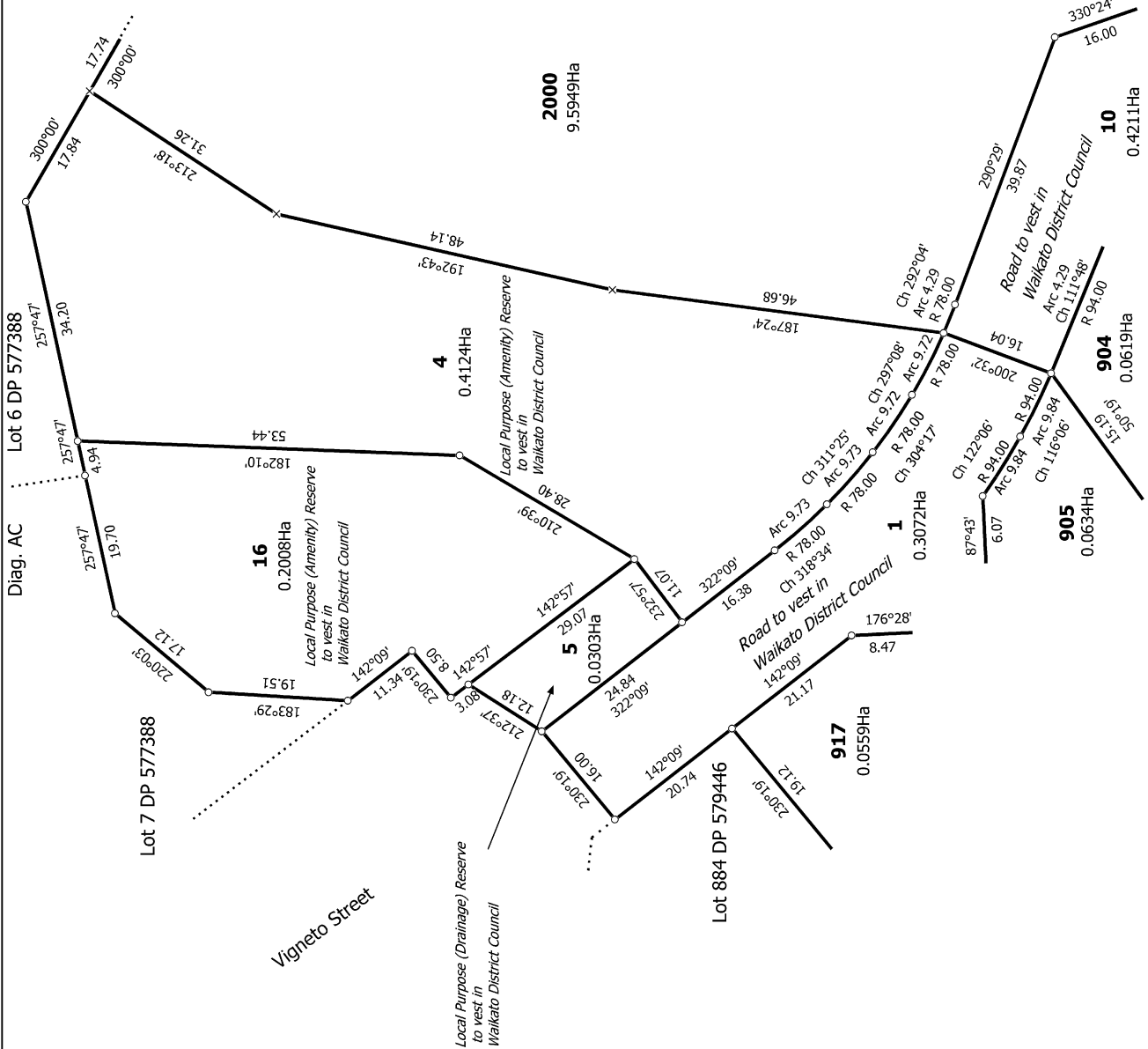
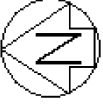
Surveyor: Campbell Lloyd Harvey
Firm: Civilplan Consultants Limited

Diag. AE

Lots 1, 4, 5, 10, 16, 892-917, 919-925 and 2000 Being a Subdivision of Lot 2003
DP 579446

Land District: North Auckland

Digitally Generated Plan
Generated on: 10/10/2023 2:29pm Page 4 of 10



T 217

Land District: North Auckland

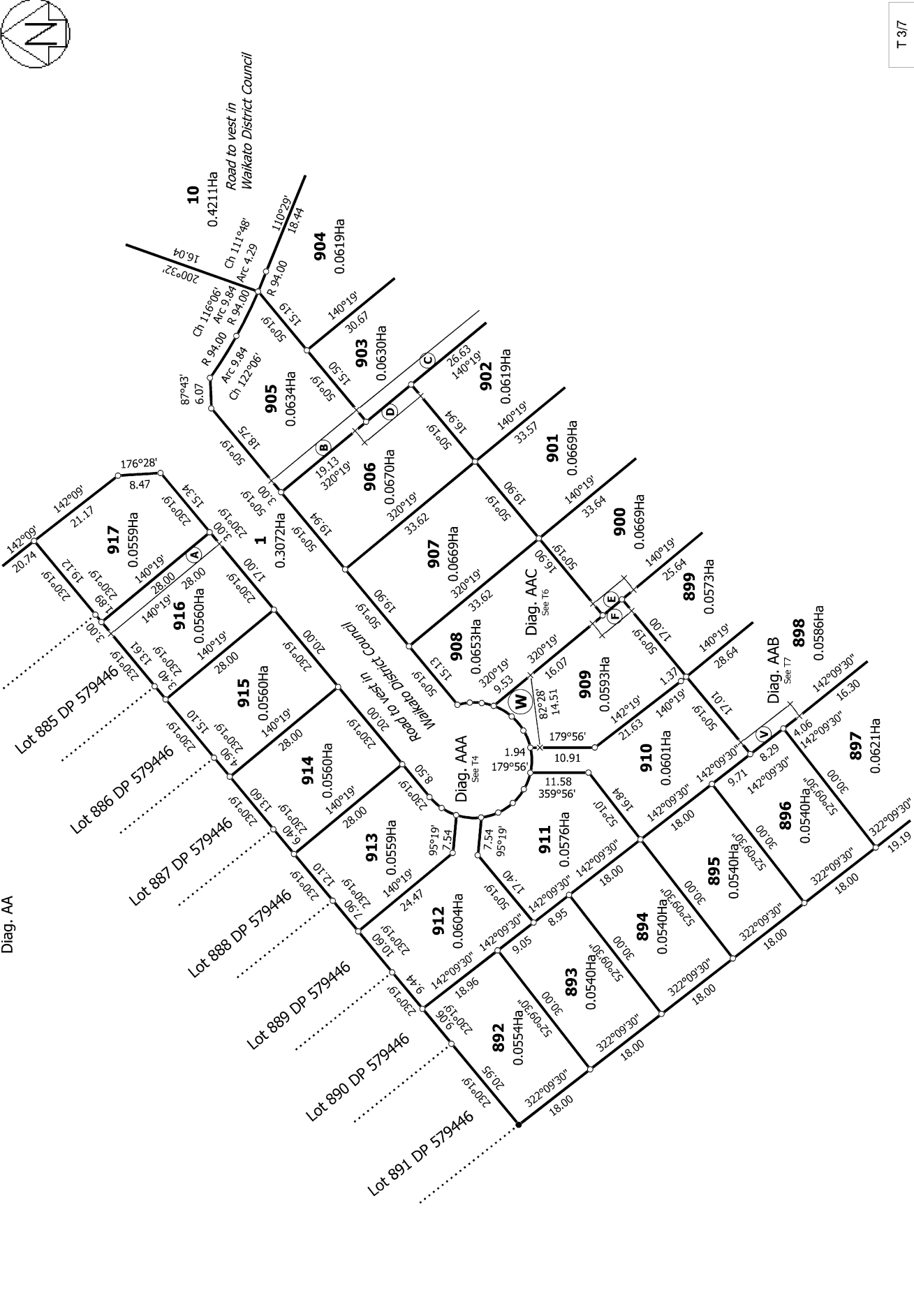
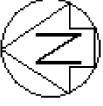
Digitally Generated Plan

Generated on: 10/10/2023 2:29pm Page 5 of 10

Title Plan
LT 590484
DRAFT

Surveyor: Campbell Lloyd Harvey
Firm: Civilplan Consultants Limited

Lots 1, 4, 5, 10, 16, 892-917, 919-925 and 2000 Being a Subdivision of Lot 2003
DP 579446



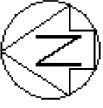
T 3/7

Land District: North Auckland
Digitally Generated Plan
 Generated on: 10/10/2023 2:29pm Page 6 of 10

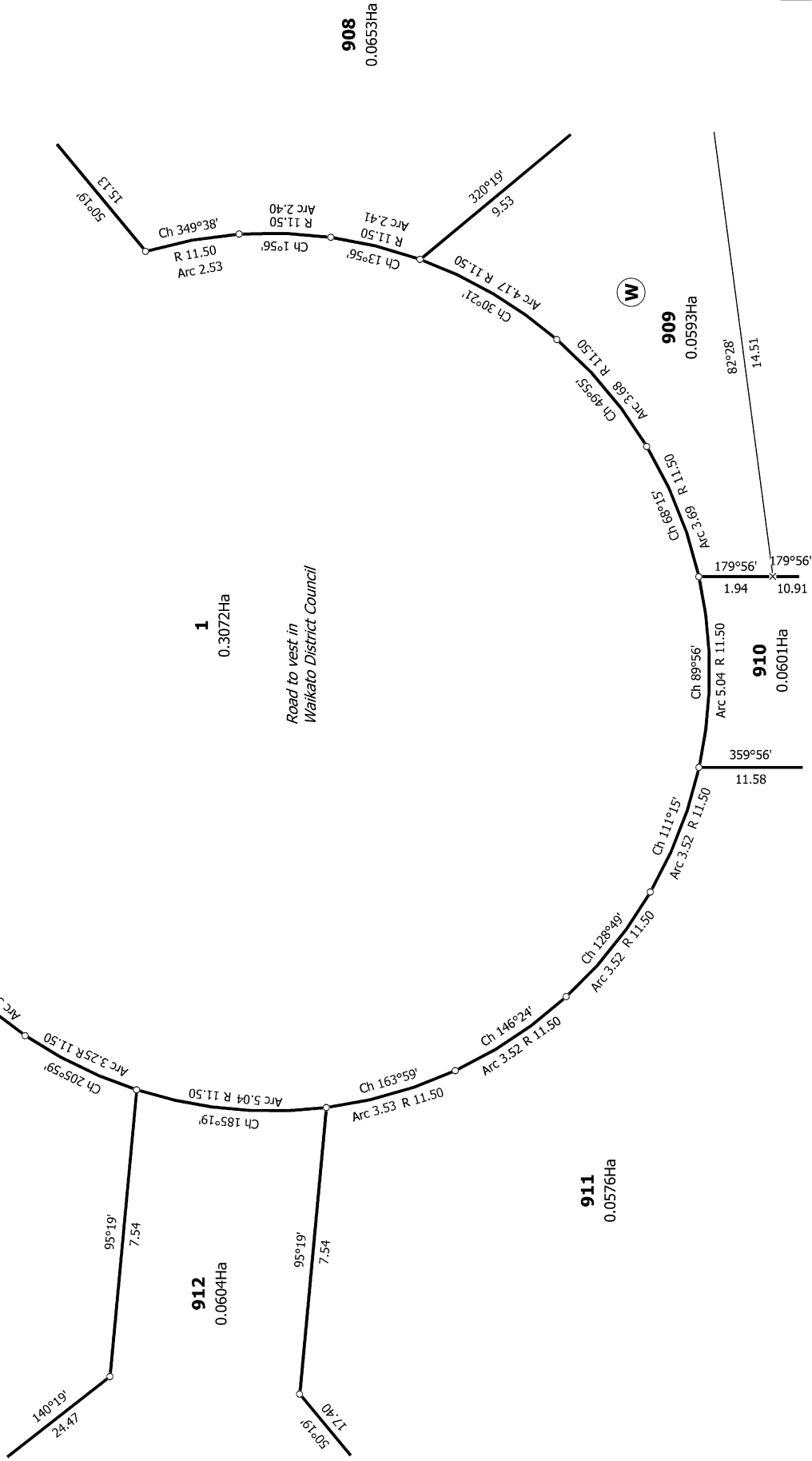
Lots 1, 4, 5, 10, 16, 892-917, 919-925 and 2000 Being a Subdivision of Lot 2003 DP 579446

Surveyor: Campbell Lloyd Harvey
 Firm: Civilplan Consultants Limited

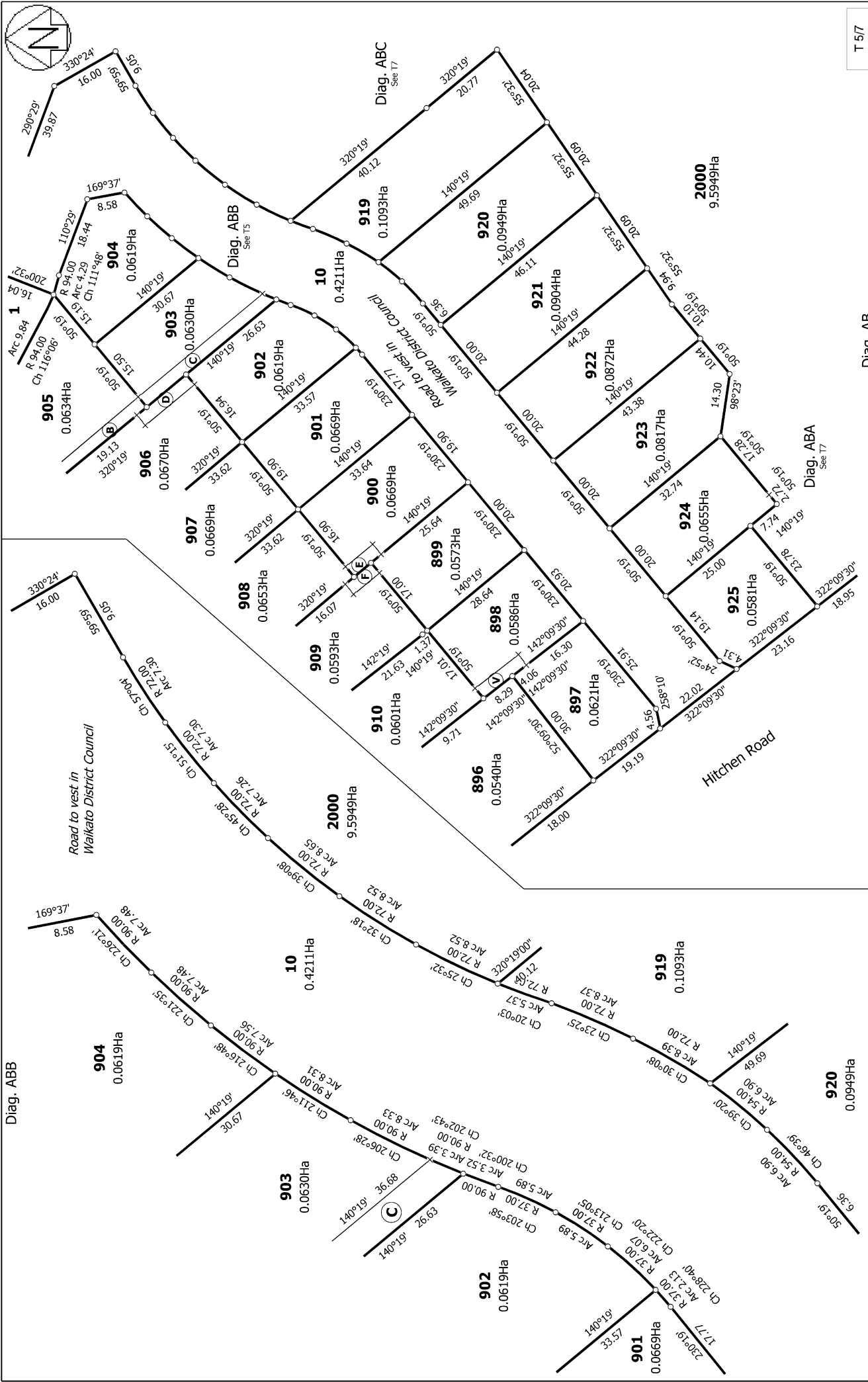
**Title Plan
 LT 590484
 DRAFT**



Diag. AAA



T 4/7



T 5/7

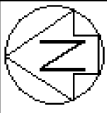
Title Plan
LT 590484
DRAFT

Surveyor: Campbell Lloyd Harvey
Firm: Civilplan Consultants Limited

Lots 1, 4, 5, 10, 16, 892-917, 919-925 and 2000 Being a Subdivision of Lot 2003
DP 579446

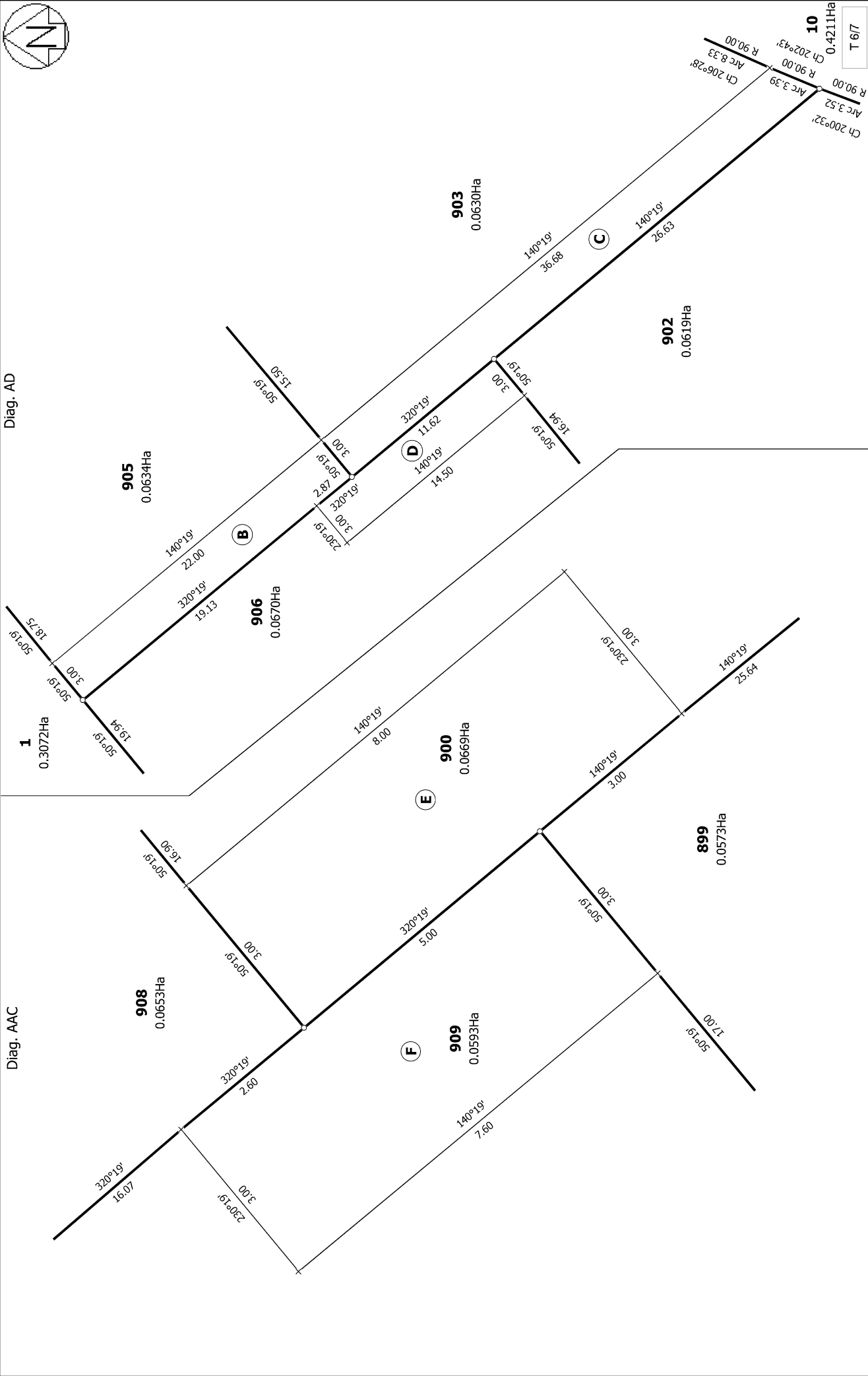
Diag. AB

Land District: North Auckland
Digitally Generated Plan
Generated on: 10/10/2023 2:29pm Page 8 of 10



Diag. AD

Diag. AAC



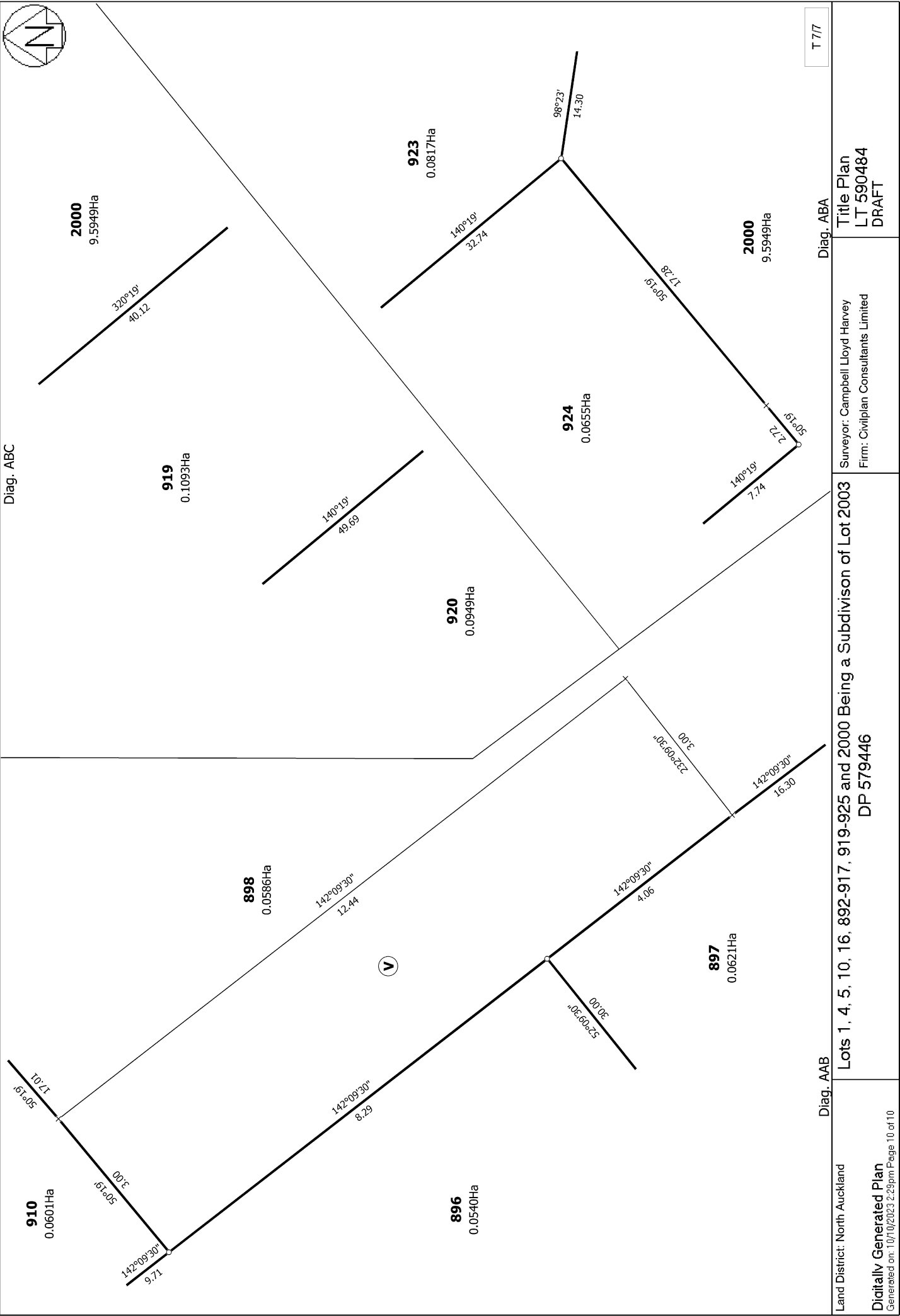
Land District: North Auckland
Digitally Generated Plan
 Generated on: 10/10/2023 2:29pm Page 9 of 10

Lots 1, 4, 5, 10, 16, 892-917, 919-925 and 2000 Being a Subdivision of Lot 2003
 DP 579446

Surveyor: Campbell Lloyd Harvey
 Firm: Civilplan Consultants Limited

Title Plan
 LT 590484
 DRAFT

T 617
 0.4211Ha
 R 90.00
 Arc 3.52
 Ch 200°32'
 R 90.00
 Arc 3.39
 R 90.00
 Ch 202°43'
 R 90.00
 Arc 8.33
 Ch 206°28'



T 7/7

Diag. ABA

Title Plan
LT 590484
DRAFT

Surveyor: Campbell Lloyd Harvey
Firm: Civilplan Consultants Limited

Lots 1, 4, 5, 10, 16, 892-917, 919-925 and 2000 Being a Subdivision of Lot 2003
DP 579446

Diag. AAB

Land District: North Auckland
Digitally Generated Plan
Generated on: 10/10/2023 2:29pm Page 10 of 10