



# Title Plan - LT 530642

---

**Survey Number** LT 530642  
**Surveyor Reference** 1981 - DFH Stage 7ab  
**Surveyor** Campbell Lloyd Harvey  
**Survey Firm** Civilplan Consultants Limited  
**Surveyor Declaration**

---

## Survey Details

**Dataset Description** Lots 8, 112, 113, 301-341, 382-393 and 1011 Being a Subdivision of Lot 1009 DP 529214  
**Status** Initiated  
**Land District** North Auckland  
**Submitted Date**  
**Survey Class** Class A  
**Survey Approval Date**  
**Deposit Date**

---

## Territorial Authorities

Waikato District

---

## Comprised In

CT 857403

---

## Created Parcels

Parcels	Parcel Intent	Area	CT Reference
Lot 8 Deposited Plan 530642	Fee Simple Title	0.0345 Ha	Multiple
Lot 112 Deposited Plan 530642	Vesting on Deposit for Road	0.7140 Ha	
Lot 113 Deposited Plan 530642	Vesting on Deposit for Road	0.5944 Ha	
Lot 301 Deposited Plan 530642	Fee Simple Title	0.0567 Ha	863855
Lot 302 Deposited Plan 530642	Fee Simple Title	0.0567 Ha	863856
Lot 303 Deposited Plan 530642	Fee Simple Title	0.0624 Ha	863857
Lot 304 Deposited Plan 530642	Fee Simple Title	0.0660 Ha	863858
Lot 305 Deposited Plan 530642	Fee Simple Title	0.0611 Ha	863859
Lot 306 Deposited Plan 530642	Fee Simple Title	0.0734 Ha	863860
Lot 307 Deposited Plan 530642	Fee Simple Title	0.0562 Ha	863872
Lot 308 Deposited Plan 530642	Fee Simple Title	0.0567 Ha	863873
Lot 309 Deposited Plan 530642	Fee Simple Title	0.0567 Ha	863874
Lot 310 Deposited Plan 530642	Fee Simple Title	0.0578 Ha	863875
Lot 311 Deposited Plan 530642	Fee Simple Title	0.0609 Ha	863876
Lot 312 Deposited Plan 530642	Fee Simple Title	0.0577 Ha	863877
Lot 313 Deposited Plan 530642	Fee Simple Title	0.0577 Ha	863878
Lot 314 Deposited Plan 530642	Fee Simple Title	0.0577 Ha	863879
Lot 315 Deposited Plan 530642	Fee Simple Title	0.0577 Ha	863880
Lot 316 Deposited Plan 530642	Fee Simple Title	0.0577 Ha	863881
Lot 317 Deposited Plan 530642	Fee Simple Title	0.0577 Ha	863882
Lot 318 Deposited Plan 530642	Fee Simple Title	0.0577 Ha	863883
Lot 319 Deposited Plan 530642	Fee Simple Title	0.0576 Ha	863884



# Title Plan - LT 530642

---

## Created Parcels

Parcels	Parcel Intent	Area	CT Reference
Lot 320 Deposited Plan 530642	Fee Simple Title	0.0564 Ha	863885
Lot 321 Deposited Plan 530642	Fee Simple Title	0.0535 Ha	863886
Lot 322 Deposited Plan 530642	Fee Simple Title	0.0573 Ha	863887
Lot 323 Deposited Plan 530642	Fee Simple Title	0.0574 Ha	863888
Lot 324 Deposited Plan 530642	Fee Simple Title	0.0576 Ha	863889
Lot 325 Deposited Plan 530642	Fee Simple Title	0.0576 Ha	863890
Lot 326 Deposited Plan 530642	Fee Simple Title	0.0576 Ha	863891
Lot 327 Deposited Plan 530642	Fee Simple Title	0.0576 Ha	863892
Lot 328 Deposited Plan 530642	Fee Simple Title	0.0540 Ha	863893
Lot 329 Deposited Plan 530642	Fee Simple Title	0.0540 Ha	863894
Lot 330 Deposited Plan 530642	Fee Simple Title	0.0540 Ha	863895
Lot 331 Deposited Plan 530642	Fee Simple Title	0.0540 Ha	863896
Lot 332 Deposited Plan 530642	Fee Simple Title	0.0554 Ha	863897
Lot 333 Deposited Plan 530642	Fee Simple Title	0.0580 Ha	863898
Lot 334 Deposited Plan 530642	Fee Simple Title	0.0571 Ha	863899
Lot 335 Deposited Plan 530642	Fee Simple Title	0.0559 Ha	863900
Lot 336 Deposited Plan 530642	Fee Simple Title	0.0540 Ha	863901
Lot 337 Deposited Plan 530642	Fee Simple Title	0.0540 Ha	863902
Lot 338 Deposited Plan 530642	Fee Simple Title	0.0540 Ha	863903
Lot 339 Deposited Plan 530642	Fee Simple Title	0.0540 Ha	863904
Lot 340 Deposited Plan 530642	Fee Simple Title	0.0540 Ha	863905
Lot 341 Deposited Plan 530642	Fee Simple Title	0.0540 Ha	863906
Lot 382 Deposited Plan 530642	Fee Simple Title	0.0640 Ha	863907
Lot 383 Deposited Plan 530642	Fee Simple Title	0.0602 Ha	863908
Lot 384 Deposited Plan 530642	Fee Simple Title	0.0610 Ha	863909
Lot 385 Deposited Plan 530642	Fee Simple Title	0.0576 Ha	863910
Lot 386 Deposited Plan 530642	Fee Simple Title	0.0576 Ha	863911
Lot 387 Deposited Plan 530642	Fee Simple Title	0.0576 Ha	863912
Lot 388 Deposited Plan 530642	Fee Simple Title	0.0583 Ha	863913
Lot 389 Deposited Plan 530642	Fee Simple Title	0.0621 Ha	863914
Lot 390 Deposited Plan 530642	Fee Simple Title	0.0599 Ha	863915
Lot 391 Deposited Plan 530642	Fee Simple Title	0.0596 Ha	863916
Lot 392 Deposited Plan 530642	Fee Simple Title	0.0567 Ha	863917
Lot 393 Deposited Plan 530642	Fee Simple Title	0.0589 Ha	863918
Lot 1011 Deposited Plan 530642	Fee Simple Title	22.1176 Ha	863919
Area A Deposited Plan 530642	Easement		
Area B Deposited Plan 530642	Easement		
Area C Deposited Plan 530642	Easement		
Area D Deposited Plan 530642	Easement		
Area E Deposited Plan 530642	Easement		
Area F Deposited Plan 530642	Easement		
<b>Total Area</b>		<b>26.5215 Ha</b>	

# Schedule / Memorandum

Land Registration District

**North Auckland**

Plan Number

**DP 530642**

Territorial Authority (the Council)

Waikato District Council – TA Reference: SUB0085/17

<b>Memorandum of Easements in Gross</b> (Pursuant to s243 Resource Management Act 1991)			
<b>Purpose</b>	<b>Shown</b>	<b>Servient Tenement</b>	<b>Grantee</b>
Right to Drain Sewage	B	Lot 315 hereon	Waikato District Council
	D	Lot 309 hereon	
Right to Drain Water	C	Lot 316 hereon	Waikato District Council
	E	Lot 310 hereon	
Right to Convey Water	A	Lot 8 hereon	Waikato District Council
Right to Drain Water and Sewage	A	Lot 8 hereon	Waikato District Council
	F	Lot 392 hereon	

<b>Schedule of Easements in Gross</b>			
<b>Purpose</b>	<b>Shown</b>	<b>Servient Tenement</b>	<b>Grantee</b>
Right to Convey Telecommunications and Computer Media	A	Lot 8 hereon	Chorus New Zealand Ltd

# Schedule / Memorandum

Land Registration District

**North Auckland**

Plan Number

**DP 530642**

Territorial Authority (the Council)

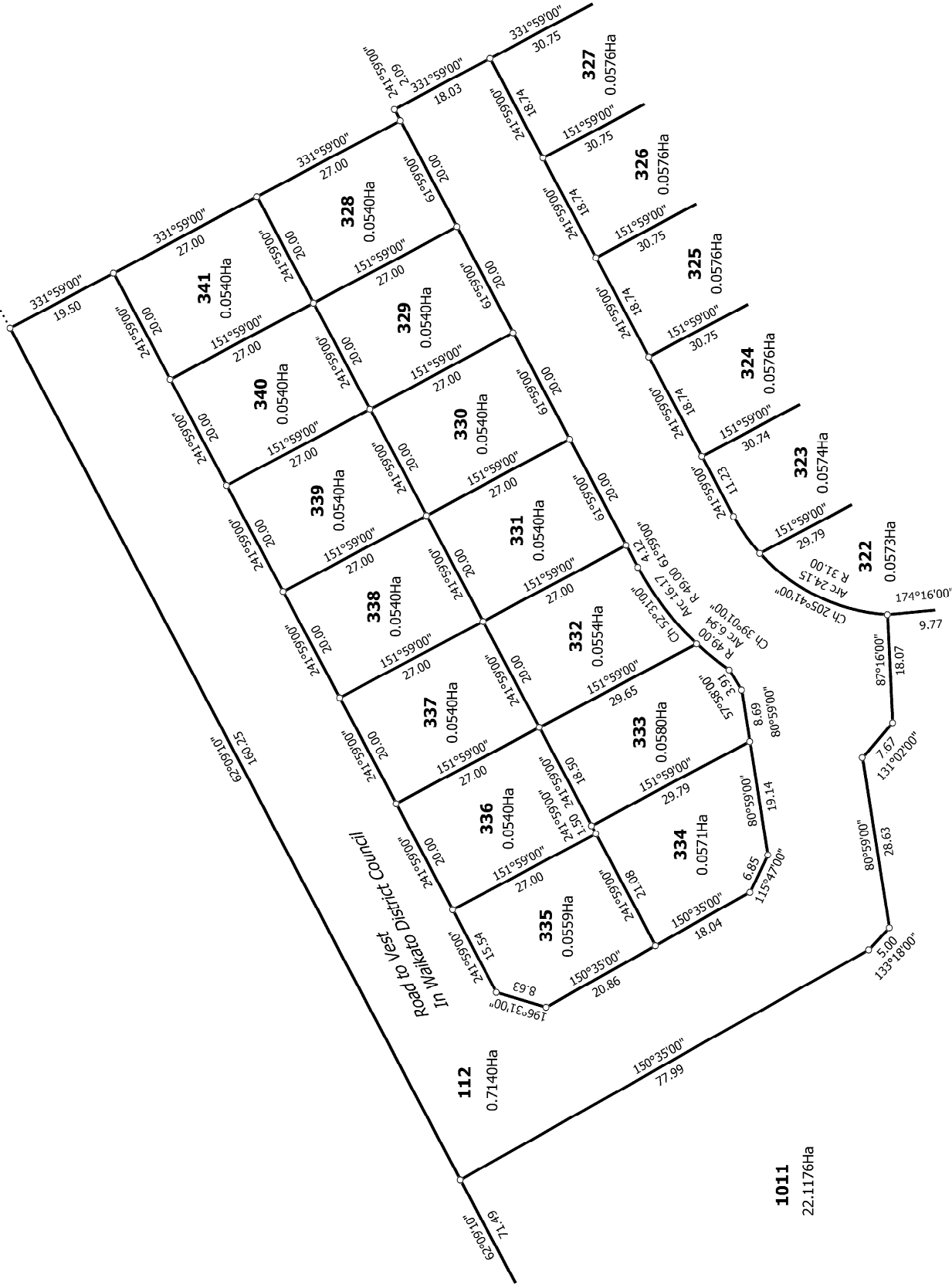
Waikato District Council – TA Reference: SUB0085/17

## **Amalgamation Condition:**

That Lot 8 hereon (legal access) be held as to four undivided one-quarter shares by the owners of Lots 303-306 hereon as tenants in common in the said shares and that individual certificates of title be issued in accordance therewith. (see LINZ request 1403020)



Diag. AB



T 2/6

Land District: North Auckland

Digitally Generated Plan

Generated on: 03/11/2010 09:54am Page 3 of 10

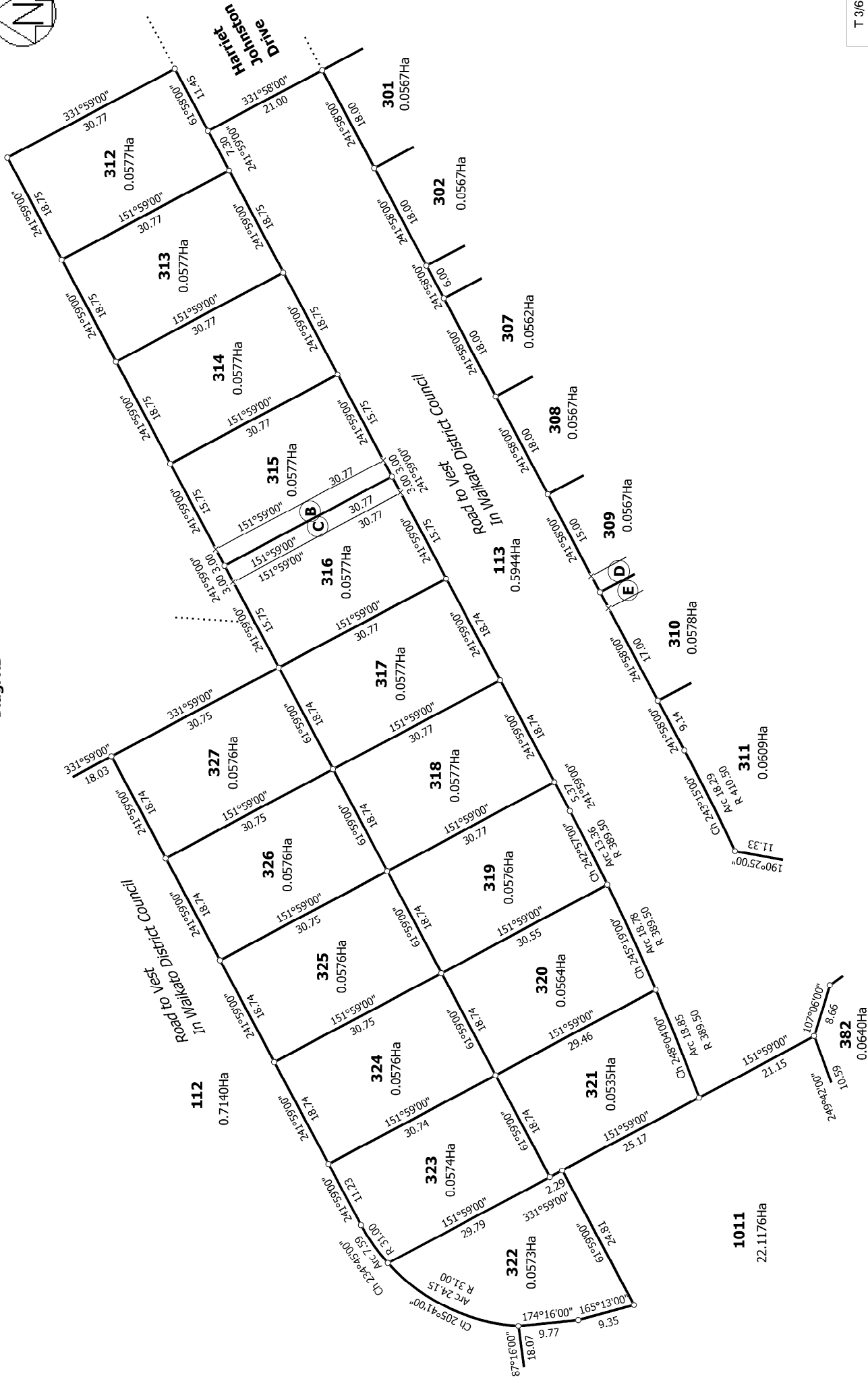
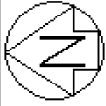
Lots 8, 112, 113, 301-341, 382-393 and 1011 Being a Subdivision of Lot 1009

DP 529214

Surveyor: Campbell Lloyd Harvey  
Firm: Civilplan Consultants Limited

Title Plan  
LT 530642  
DRAFT

Diag. AD



T 3/6

Land District: North Auckland  
 Digitally Generated Plan  
 Generated on: 03/11/2018 09:54:46m Page 7 of 10

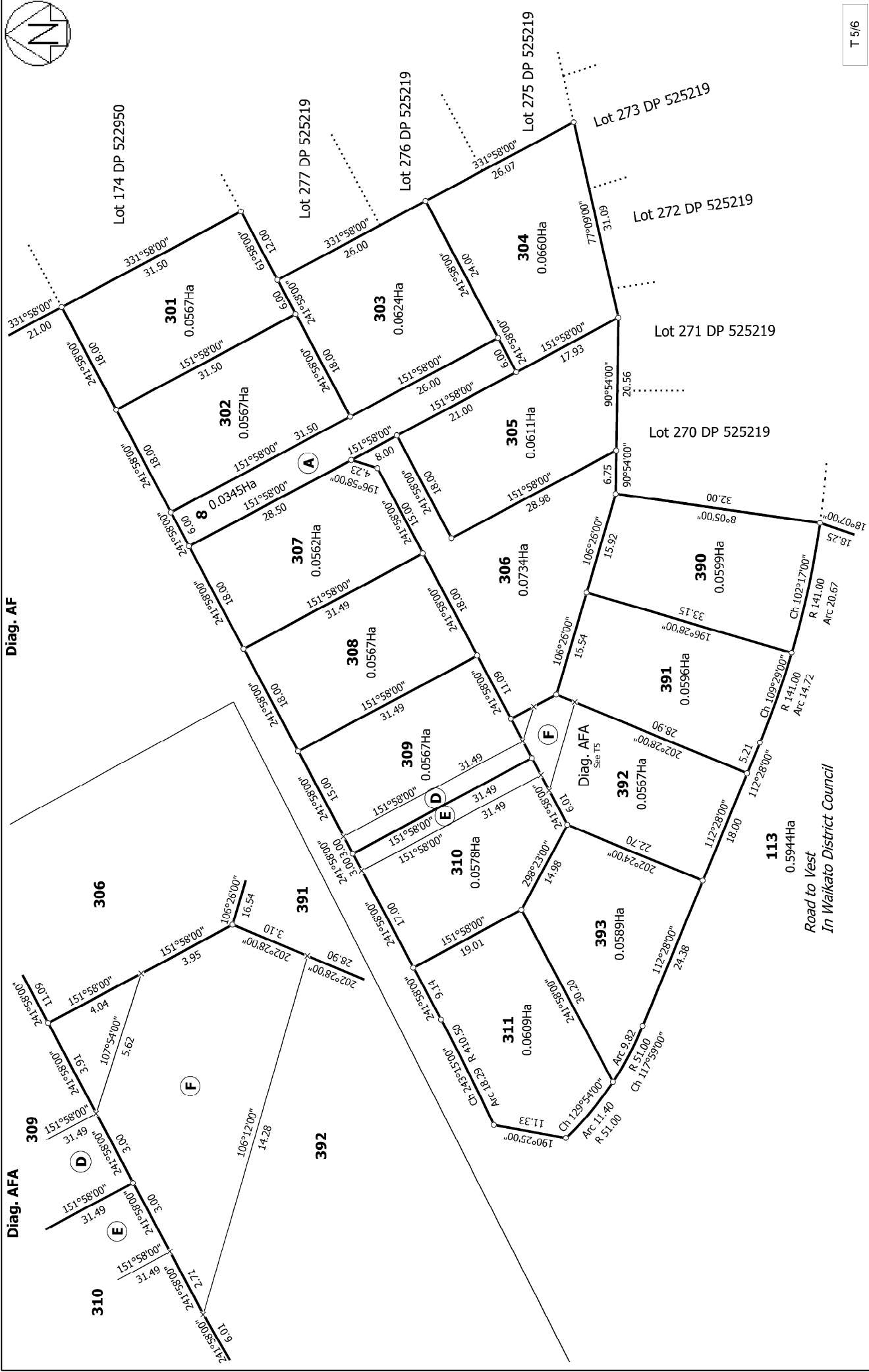
Lots 8, 112, 113, 301-341, 382-393 and 1011 Being a Subdivision of Lot 1009  
 DP 529214

Surveyor: Campbell Lloyd Harvey  
 Firm: Civilplan Consultants Limited

Title Plan  
 LT 530642  
 DRAFT







T 5/6

Title Plan  
LT 530642  
DRAFT

Surveyor: Campbell Lloyd Harvey  
Firm: Civilplan Consultants Limited

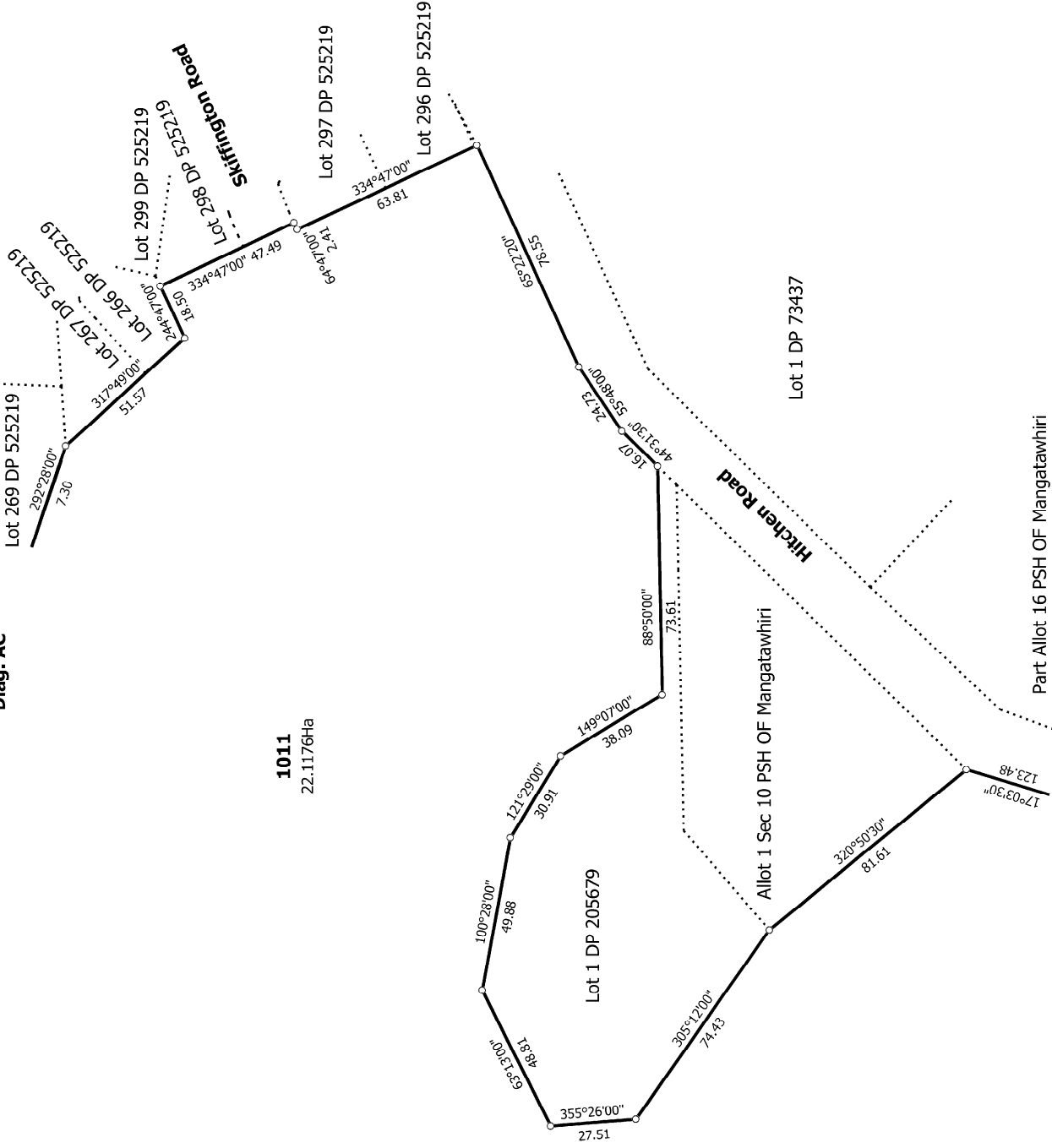
Lots 8, 112, 113, 301-341, 382-393 and 1011 Being a Subdivision of Lot 1009  
DP 529214

Land District: North Auckland  
**Digitally Generated Plan**  
Generated on: 03/11/2018 09:54:46 AM Page 3 of 10



Diag. AC

1011  
22.1176Ha



T 6/6

Land District: North Auckland

Digitally Generated Plan

Generated on: 03/11/2018 09:54:46m Page 10 of 10

Lots 8, 112, 113, 301-341, 382-393 and 1011 Being a Subdivision of Lot 1009

DP 529214

Surveyor: Campbell Lloyd Harvey  
Firm: Civilplan Consultants Limited

Title Plan  
LT 530642  
DRAFT